

AE027

Leader in Biomolecular Solutions for Life Science



HRP-conjugated Mouse anti GST-Tag mAb

Catalog No.: AE027

3 Publications

Basic Information

Observed MW

27kDa

Calculated MW

26kDa

Category

Tag & Loading Control

Applications

WB

Cross-Reactivity

Species independent

CloneNo number

AMC0513

Conjugate

HRP

Background

Glutathione S-transferases (GSTs), previously known as ligandins, comprise a family of eukaryotic and prokaryotic phase II metabolic isozymes best known for their ability to catalyze the conjugation of the reduced form of glutathione (GSH) to xenobiotic substrates for the purpose of detoxification. The GST family consists of three superfamilies: the cytosolic, mitochondrial, and microsomal—also known as MAPEG—proteins. Members of the GST superfamily are extremely diverse in amino acid sequence, and a large fraction of the sequences deposited in public databases are of unknown function. The Enzyme Function Initiative (EFI) is using GSTs as a model superfamily to identify new GST functions. A GST-tag is often used to separate and purify proteins that contain the GST-fusion protein. The tag is 220 amino acids (roughly 26 kDa) in size, which, compared to tags such as the Myc-tag or the FLAG-tag, is quite large. It can be fused to either the N-terminus or C-terminus of a protein. However, many commercially available sources of GST-tagged plasmids include a thrombin domain for cleavage of the GST tag during protein purification.

Recommended Dilutions

WB 1:2000 - 1:10000

Immunogen Information

Gene ID

Swiss Prot

Immunogen

Recombinant protein containing a sequence corresponding to amino acids 1-218 of GST protein.

Synonyms

GST;GST tag;GST-tag

Contact



www.abclonal.com

Product Information

Source

Mouse

Isotype

igg2b,Kappa

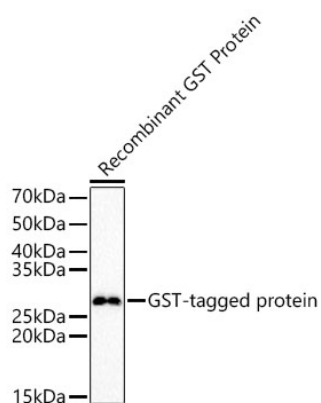
Purification

Affinity purification

Storage

Store at -20°C. Avoid freeze / thaw cycles.
Buffer: PBS with 50% glycerol,pH7.3.

Validation Data



Western blot analysis of recombinant GST Protein using HRP-conjugated Mouse anti GST-Tag mAb (AE027) at 1:5000 dilution.
Lysates/proteins: 20 ng per lane.
Blocking buffer: 3% nonfat dry milk in TBST.
Detection: ECL Basic Kit (RM00020).
Exposure time: 60s.