

Rabbit anti V5-Tag pAb

Catalog No.: AE022

Basic Information

Observed MW

Refer to Figures

Calculated MW

Category

Tag antibody

Applications

WB

Cross-Reactivity

Species independent

Background

Protein tags are peptide sequences genetically grafted onto a recombinant protein. Often these tags are removable by chemical agents or by enzymatic means, such as proteolysis or intein splicing. Tags are attached to proteins for various purposes. Epitope tags are short peptide sequences which are chosen because high-affinity antibodies can be reliably produced in many different species. These are usually derived from viral genes, which explain their high immunoreactivity. Epitope tags include V5-tag, Myc-tag, HA-tag and NE-tag. These tags are particularly useful for western blotting, immunofluorescence and immunoprecipitation experiments, although they also find use in antibody purification.

Recommended Dilutions

WB 1:1000 - 1:2000

Immunogen Information

Gene ID

Swiss Prot

Immunogen

A synthetic peptide corresponding to V5 tag.

Synonyms

V5;V5 tag;V5-tag

Contact

 | www.abclonal.com

Product Information

Source

Rabbit

Isotype

IgG

Purification

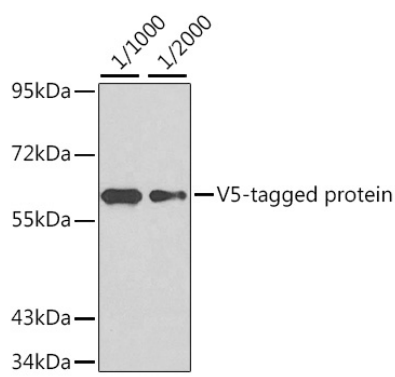
Affinity purification

Storage

Store at 4°C. Avoid freeze / thaw cycles.

Buffer: PBS with 0.02% sodium azide, pH7.3.

Validation Data



Western blot analysis of over-expressed V5-tagged protein in 293T cell using V5-tag antibody (AE022) at different dilution.
Secondary antibody: HRP Goat Anti-Rabbit IgG (H+L) (AS014) at 1:10000 dilution.