

TUBB3 Polyclonal Antibody

Catalog No	AC008	Category	Loading control Antibodies
Applications	WB	Observed MW	Refer to Figures
Cross-Reactivity	Human,Mouse,Rat	Calculated MW	42kDa/50kDa

Immunogen Information

Immunogen	Recombinant fusion protein containing a sequence corresponding to amino acids 40-260 of human TUBB3 (NP_006077.2).
Gene ID	10381
Swiss Prot	Q13509
Synonyms	beta-4,CDCBM,CDCBM1,CFEOM3,CFEOM3A,FEOM3,TUBB4

Product information

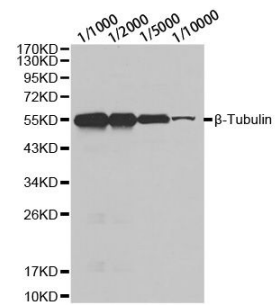
Source	Rabbit
Isotype	IgG
Purity	Affinity purification
Storage	Store at -20°C. Avoid freeze / thaw cycles. Buffer: PBS with 0.02% sodium azide, 50% glycerol, pH7.3.

Background

This gene encodes a class III member of the beta tubulin protein family. Beta tubulins are one of two core protein families (alpha and beta tubulins) that heterodimerize and assemble to form microtubules. This protein is primarily expressed in neurons and may be involved in neurogenesis and axon guidance and maintenance. Mutations in this gene are the cause of congenital fibrosis of the extraocular muscles type 3. Alternate splicing results in multiple transcript variants. A pseudogene of this gene is found on chromosome 6.

Recommended Dilutions

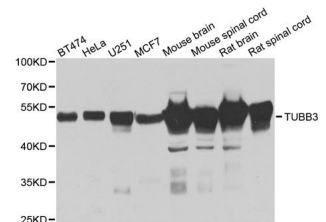
WB 1:500 - 1:5000



Western blot analysis of extracts of various cell lines, using TUBB3 antibody (AC008) at 1:1000 dilution. Secondary antibody: HRP Goat Anti-Rabbit IgG (H+L) (AS014) at 1:10000 dilution.

Lysates/proteins: 25ug per lane. Blocking buffer: 3% nonfat dry milk in TBST.

Detection: ECL Basic Kit (RM0020). Exposure time: 90s.



Western blot analysis of HeLa cell using β -tubulin antibody (AC008) at different dilution. Each lane was loaded with 10 ug cell lysate.

Secondary antibody: HRP Goat Anti-Rabbit IgG (H+L) (AS014) at 1:10000 dilution.

Lysates/proteins: 25ug per lane. Blocking buffer: 3% nonfat dry milk in TBST.