

TUBA4A Polyclonal Antibody

Catalog No	AC007	Category	Loading control Antibodies
Applications	WB	Observed MW	55kDa
Cross-Reactivity	Human,Mouse,Rat	Calculated MW	48kDa/49kDa

Immunogen Information

Immunogen	Recombinant protein of human Tubulin protein
Gene ID	7277
Swiss Prot	P68366
Synonyms	ALS22,H2-ALPHA,TUBA1

Product information

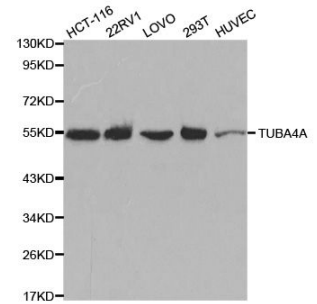
Source	Rabbit
Isotype	IgG
Purity	Affinity purification
Storage	Store at -20°C. Avoid freeze / thaw cycles. Buffer: PBS with 0.02% sodium azide, 50% glycerol, pH7.3.

Background

Microtubules of the eukaryotic cytoskeleton perform essential and diverse functions and are composed of a heterodimer of alpha and beta tubulin. The genes encoding these microtubule constituents are part of the tubulin superfamily, which is composed of six distinct families. Genes from the alpha, beta and gamma tubulin families are found in all eukaryotes. The alpha and beta tubulins represent the major components of microtubules, while gamma tubulin plays a critical role in the nucleation of microtubule assembly. There are multiple alpha and beta tubulin genes and they are highly conserved among and between species. This gene encodes an alpha tubulin that is a highly conserved homolog of a rat testis-specific alpha tubulin. Alternatively spliced transcript variants encoding different isoforms have been found for this gene.

Recommended Dilutions

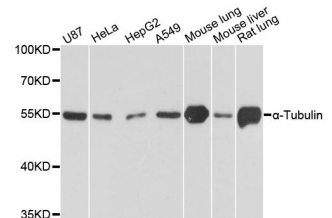
WB 1:2000 - 1:10000



Western blot analysis of extracts of various cell lines, using α -Tubulin antibody (AC007).

Secondary antibody: HRP Goat Anti-Rabbit IgG (H+L) (AS014) at 1:10000 dilution.

Lysates/proteins: 25ug per lane.
Blocking buffer: 3% nonfat dry milk in TBST.



Western blot analysis of extracts of various cell lines, using α -Tubulin antibody (AC007) at 1:10000 dilution.
Secondary antibody: HRP Goat Anti-Rabbit IgG (H+L) (AS014) at 1:10000 dilution.

Lysates/proteins: 25ug per lane.
Blocking buffer: 3% nonfat dry milk in TBST.

Detection: ECL Basic Kit (RM00020).
Exposure time: 1s.