

A8531

Leader in Biomolecular Solutions for Life Science



## LAMP2 Mouse mAb

Catalog No.: A8531

### Basic Information

**Observed MW**

45kDa

**Calculated MW**

45kDa

**Category**

SMab Recombinant Monoclonal Antibody

**Applications**

WB,IHC-P,ELISA

**Cross-Reactivity**

Human,Mouse

### Background

The protein encoded by this gene is a member of a family of membrane glycoproteins. This glycoprotein provides selectins with carbohydrate ligands. It may play a role in tumor cell metastasis. It may also function in the protection, maintenance, and adhesion of the lysosome. Alternative splicing of this gene results in multiple transcript variants encoding distinct proteins.

### Recommended Dilutions

WB	1:200 - 1:1000
IHC-P	1:20 - 1:200

### Immunogen Information

<b>Gene ID</b>	<b>Swiss Prot</b>
3920	P13473

**Immunogen**

A synthetic peptide of human LAMP2

**Synonyms**

DND; LAMPB; CD107b; LAMP-2; LGP-96; LGP110; LAMP2

### Contact



[www.abclonal.com](http://www.abclonal.com)

### Product Information

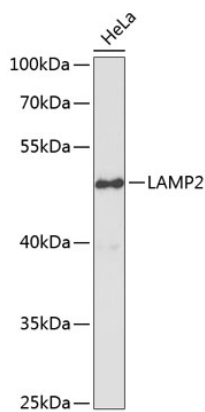
<b>Source</b>	<b>Isotype</b>	<b>Purification</b>
Mouse	IgG	Affinity purification

**Storage**

Store at 4°C. Avoid freeze / thaw cycles.  
Buffer: PBS with 0.02% sodium azide,pH7.3.

## Validation Data

---



Western blot analysis of lysates from HeLa cells, using LAMP2 Mouse mAb (A8531).  
Secondary antibody: HRP Goat Anti-Mouse IgG (H+L) (AS003) at 1:10000 dilution.  
Lysates/proteins: 25µg per lane.  
Blocking buffer: 3% nonfat dry milk in TBST.