

A8267

Leader in Biomolecular Solutions for Life Science



# DNAL1 Rabbit pAb

Catalog No.: A8267

## Basic Information

### Observed MW

22kDa

### Calculated MW

22kDa

### Category

Polyclonal Antibody

### Applications

WB, IF/ICC, ELISA

### Cross-Reactivity

Human, Mouse, Rat

## Background

This gene encodes an axonemal dynein light chain which functions as a component of the outer dynein arms complex. This complex acts as the molecular motor that provides the force to move cilia in an ATP-dependent manner. The encoded protein is expressed in tissues with motile cilia or flagella and may be involved in the movement of sperm flagella. Alternate splicing results in multiple transcript variants.

## Recommended Dilutions

WB	1:500 - 1:2000
IF/ICC	1:50 - 1:100

## Immunogen Information

### Gene ID

83544

### Swiss Prot

Q4LDG9

### Immunogen

Recombinant fusion protein containing a sequence corresponding to amino acids 41-190 of human DNAL1 (NP\_113615.2).

### Synonyms

LC1; CILD16; C14orf168; DNAL1

## Contact



[www.abclonal.com](http://www.abclonal.com)

## Product Information

### Source

Rabbit

### Isotype

IgG

### Purification

Affinity purification

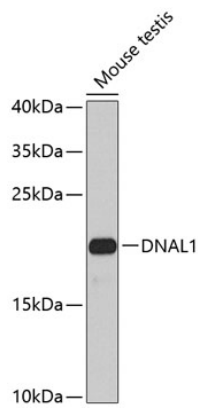
### Storage

Store at -20°C. Avoid freeze / thaw cycles.

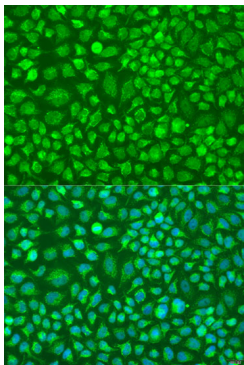
Buffer: PBS with 0.02% sodium azide, 50% glycerol, pH7.3.

## Validation Data

---



Western blot analysis of extracts of mouse testis, using DNAL1 antibody (A8267) at 1:1000 dilution.  
Secondary antibody: HRP Goat Anti-Rabbit IgG (H+L) (A5014) at 1:10000 dilution.  
Lysates/proteins: 25µg per lane.  
Blocking buffer: 3% nonfat dry milk in TBST.  
Detection: ECL Basic Kit (RM00020).  
Exposure time: 90s.



Immunofluorescence analysis of U2OS cells using DNAL1 antibody (A8267) at dilution of 1:100. Blue: DAPI for nuclear staining.