

A8180

Leader in Biomolecular Solutions for Life Science



## SLC12A6 Rabbit pAb

Catalog No.: A8180

### Basic Information

#### Observed MW

**Calculated MW**  
128kDa

**Category**  
Polyclonal Antibody

**Applications**  
IF/ICC,ELISA

**Cross-Reactivity**  
Human

### Background

This gene is a member of the K-Cl cotransporter (KCC) family. K-Cl cotransporters are integral membrane proteins that lower intracellular chloride concentrations below the electrochemical equilibrium potential. The proteins encoded by this gene are activated by cell swelling induced by hypotonic conditions. Alternate splicing results in multiple transcript variants encoding different isoforms. Mutations in this gene are associated with agenesis of the corpus callosum with peripheral neuropathy.

### Recommended Dilutions

IF/ICC 1:50 - 1:200

### Immunogen Information

<b>Gene ID</b> 9990	<b>Swiss Prot</b> Q9UHW9
------------------------	-----------------------------

#### Immunogen

Recombinant fusion protein containing a sequence corresponding to amino acids 60-190 of human SLC12A6 (NP\_598408.1).

#### Synonyms

KCC3; ACCPN; KCC3A; KCC3B; CMT2II; SLC12A6

### Contact



[www.abclonal.com](http://www.abclonal.com)

### Product Information

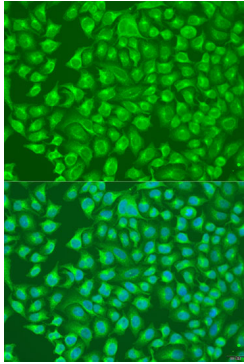
<b>Source</b> Rabbit	<b>Isotype</b> IgG	<b>Purification</b> Affinity purification
-------------------------	-----------------------	--

#### Storage

Store at -20°C. Avoid freeze / thaw cycles.  
Buffer: PBS with 0.02% sodium azide,50% glycerol,pH7.3.

## Validation Data

---



Immunofluorescence analysis of U2OS cells using SLC12A6 antibody (A8180) at dilution of 1:100. Blue: DAPI for nuclear staining.