

A7488

Leader in Biomolecular Solutions for Life Science



# Fibronectin Rabbit pAb

Catalog No.: A7488

7 Publications

## Basic Information

### Observed MW

290kDa

### Calculated MW

272kDa

### Category

Polyclonal Antibody

### Applications

WB, ELISA

### Cross-Reactivity

Human, Mouse, Rat

## Background

This gene encodes fibronectin, a glycoprotein present in a soluble dimeric form in plasma, and in a dimeric or multimeric form at the cell surface and in extracellular matrix. The encoded preproprotein is proteolytically processed to generate the mature protein. Fibronectin is involved in cell adhesion and migration processes including embryogenesis, wound healing, blood coagulation, host defense, and metastasis. The gene has three regions subject to alternative splicing, with the potential to produce 20 different transcript variants, at least one of which encodes an isoform that undergoes proteolytic processing. The full-length nature of some variants has not been determined.

## Recommended Dilutions

WB 1:500 - 1:2000

## Immunogen Information

### Gene ID

2335

### Swiss Prot

P02751

### Immunogen

Recombinant fusion protein containing a sequence corresponding to amino acids 1-128 of human Fibronectin (NP\_002017.1).

### Synonyms

FN; CIG; FNZ; MSF; ED-B; FINC; GFND; LETS; GFND2; SMDCF; Fibronectin

## Contact



[www.abclonal.com](http://www.abclonal.com)

## Product Information

### Source

Rabbit

### Isotype

IgG

### Purification

Affinity purification

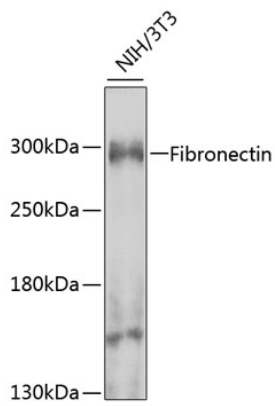
### Storage

Store at -20°C. Avoid freeze / thaw cycles.

Buffer: PBS with 0.02% sodium azide, 50% glycerol, pH 7.3.

## Validation Data

---



Western blot analysis of lysates from NIH/3T3 cells, using Fibronectin Rabbit pAb (A7488) at 1:1000 dilution.

Secondary antibody: HRP Goat Anti-Rabbit IgG (H+L) (AS014) at 1:10000 dilution.

Lysates/proteins: 25µg per lane.

Blocking buffer: 3% nonfat dry milk in TBST.

Detection: ECL Enhanced Kit (RM00021).

Exposure time: 90s.