

A7353

Leader in Biomolecular Solutions for Life Science



## Beclin 1 Rabbit pAb

Catalog No.: A7353

114 Publications

### Basic Information

#### Observed MW

60kDa

#### Calculated MW

52kDa

#### Category

Polyclonal Antibody

#### Applications

WB,IP,ELISA

#### Cross-Reactivity

Human,Mouse,Rat

### Background

This gene encodes a protein that regulates autophagy, a catabolic process of degradation induced by starvation. The encoded protein is a component of the phosphatidylinositol-3-kinase (PI3K) complex which mediates vesicle-trafficking processes. This protein is thought to play a role in multiple cellular processes, including tumorigenesis, neurodegeneration and apoptosis. Alternative splicing results in multiple transcript variants.

### Recommended Dilutions

**WB** 1:500 - 1:2000

**IP** 0.5µg-4µg antibody for  
200µg-400µg extracts of  
whole cells

### Immunogen Information

#### Gene ID

8678

#### Swiss Prot

Q14457

#### Immunogen

Recombinant fusion protein containing a sequence corresponding to amino acids 1-280 of human Beclin 1 (NP\_003757.1).

#### Synonyms

ATG6; VPS30; beclin1; Beclin 1

### Contact



[www.abclonal.com](http://www.abclonal.com)

### Product Information

#### Source

Rabbit

#### Isotype

IgG

#### Purification

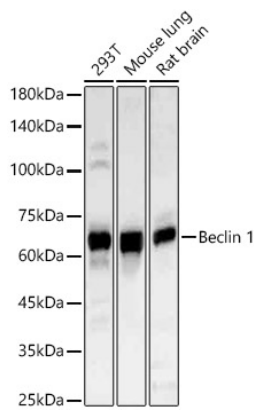
Affinity purification

#### Storage

Store at -20°C. Avoid freeze / thaw cycles.

Buffer: PBS with 0.05% proclin300,50% glycerol,pH7.3.

Validation Data



Western blot analysis of various lysates, using [KO Validated] Beclin 1 Rabbit pAb (A7353) at 1:1000 dilution.  
Secondary antibody: HRP Goat Anti-Rabbit IgG (H+L) (AS014) at 1:10000 dilution.  
Lysates/proteins: 25µg per lane.  
Blocking buffer: 3% nonfat dry milk in TBST.  
Detection: ECL Basic Kit (RM00020).  
Exposure time: 60s.

Immunoprecipitation analysis of 200 µg extracts of HeLa cells using 3 µg Beclin 1 antibody (A7353).  
Western blot was performed from the immunoprecipitate using Beclin 1 antibody (A7353) at a dilution of 1:1000.

