

A7318

Leader in Biomolecular Solutions for Life Science



YTHDC1 Rabbit pAb

Catalog No.: A7318

2 Publications

Basic Information

Observed MW

110kDa

Calculated MW

85kDa

Category

Polyclonal Antibody

Applications

WB, IF/ICC, ELISA

Cross-Reactivity

Human, Mouse, Rat

Background

Enables N6-methyladenosine-containing RNA binding activity. Involved in mRNA export from nucleus; mRNA splice site selection; and regulation of gene expression. Located in nuclear speck and plasma membrane.

Recommended Dilutions

WB 1:1000 - 1:5000

IF/ICC 1:50 - 1:100

Immunogen Information

Gene ID

91746

Swiss Prot

Q96MU7

Immunogen

Recombinant fusion protein containing a sequence corresponding to amino acids 1-74 of human YTHDC1 (NP_001026902.1).

Synonyms

YT521; YT521-B; YTHDC1

Contact



www.abclonal.com

Product Information

Source

Rabbit

Isotype

IgG

Purification

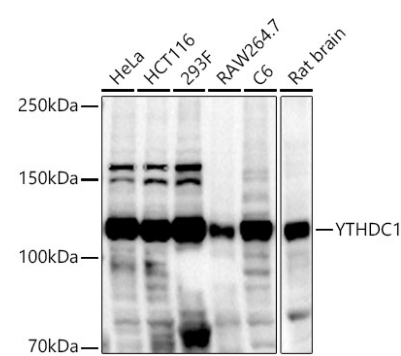
Affinity purification

Storage

Store at -20°C. Avoid freeze / thaw cycles.

Buffer: PBS with 0.05% proclin300, 50% glycerol, pH7.3.

Validation Data



Western blot analysis of extracts of various cell lines, using YTHDC1 antibody (A7318) at 1:2000 dilution.
Secondary antibody: HRP Goat Anti-Rabbit IgG (H+L) (A5014) at 1:10000 dilution.
Lysates/proteins: 25µg per lane.
Blocking buffer: 3% nonfat dry milk in TBST.
Detection: ECL Basic Kit (RM00020).
Exposure time: 10s.