

A6796

Leader in Biomolecular Solutions for Life Science



## CPT1B Rabbit pAb

Catalog No.: A6796

11 Publications

### Basic Information

#### Observed MW

88kDa

#### Calculated MW

88kDa

#### Category

Mouse Monoclonal Antibody

#### Applications

WB, IHC-P, ELISA

#### Cross-Reactivity

Human, Mouse, Rat

### Background

The protein encoded by this gene, a member of the carnitine/choline acetyltransferase family, is the rate-controlling enzyme of the long-chain fatty acid beta-oxidation pathway in muscle mitochondria. This enzyme is required for the net transport of long-chain fatty acyl-CoAs from the cytoplasm into the mitochondria. Multiple transcript variants encoding different isoforms have been found for this gene, and read-through transcripts are expressed from the upstream locus that include exons from this gene.

### Recommended Dilutions

WB	1:100 - 1:500
IHC-P	1:50 - 1:200

### Immunogen Information

#### Gene ID

1375

#### Swiss Prot

Q92523

#### Immunogen

Recombinant fusion protein containing a sequence corresponding to amino acids 533-772 of human CPT1B (NP\_004368.1).

#### Synonyms

CPTI; CPT1M; MCPT1; CPT1-M; CPTI-M; M-CPT1; MCCPT1; CPT1B

### Contact



[www.abclonal.com](http://www.abclonal.com)

### Product Information

#### Source

Rabbit

#### Isotype

IgG

#### Purification

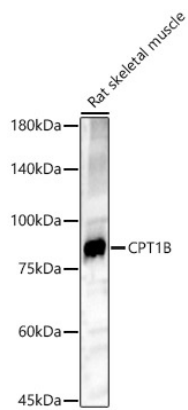
Affinity purification

#### Storage

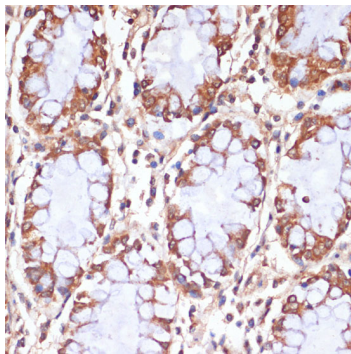
Store at -20°C. Avoid freeze / thaw cycles.

Buffer: PBS with 0.02% sodium azide, 50% glycerol, pH 7.3.

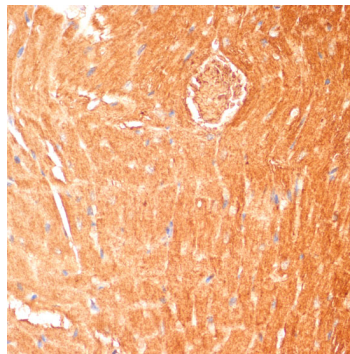
## Validation Data



Western blot analysis of lysates from Rat skeletal muscle, using CPT1B Rabbit pAb (A6796) at 1:500 dilution.  
Secondary antibody: HRP Goat Anti-Rabbit IgG (H+L) (AS014) at 1:10000 dilution.  
Lysates/proteins: 25ug per lane.  
Blocking buffer: 3% nonfat dry milk in TBST.  
Detection: ECL Basic Kit (RM00020).  
Exposure time: 180s.



Immunohistochemistry analysis of CPT1B in paraffin-embedded human colon using CPT1B Rabbit pAb (A6796) at dilution of 1:100 (40x lens). Perform microwave antigen retrieval with 10 mM PBS buffer pH 7.2 before commencing with IHC staining protocol.



Immunohistochemistry analysis of CPT1B in paraffin-embedded mouse heart using CPT1B Rabbit pAb (A6796) at dilution of 1:100 (40x lens). Perform microwave antigen retrieval with 10 mM PBS buffer pH 7.2 before commencing with IHC staining protocol.