

A6102

Leader in Biomolecular Solutions for Life Science



KHDRBS2 Rabbit pAb

Catalog No.: A6102

Basic Information

Observed MW

39kDa

Calculated MW

39kDa

Category

Polyclonal Antibody

Applications

WB,IHC-P,ELISA

Cross-Reactivity

Human,Mouse

Background

Predicted to enable mRNA binding activity and poly(A) binding activity. Predicted to be involved in regulation of alternative mRNA splicing, via spliceosome. Predicted to be located in nucleoplasm. Predicted to be active in nucleus.

Recommended Dilutions

WB	1:500 - 1:1000
IHC-P	1:100 - 1:200

Immunogen Information

Gene ID

202559

Swiss Prot

Q5VWX1

Immunogen

A synthetic peptide corresponding to a sequence within amino acids 200 to the C-terminus of human KHDRBS2 (NP_689901.2).

Synonyms

SLM1; SLM-1; KHDRBS2

Contact



www.abclonal.com

Product Information

Source

Rabbit

Isotype

IgG

Purification

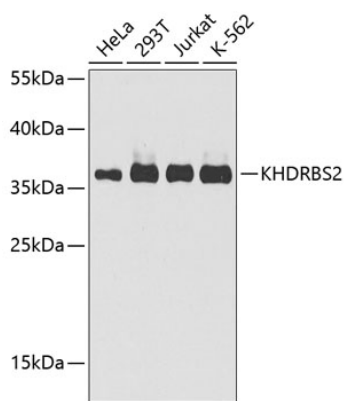
Affinity purification

Storage

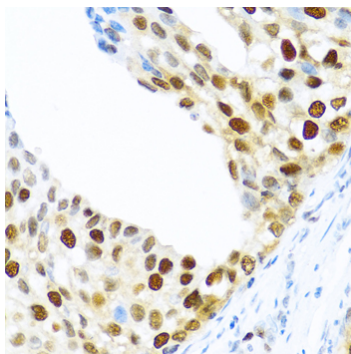
Store at -20°C. Avoid freeze / thaw cycles.

Buffer: PBS with 0.02% sodium azide,50% glycerol,pH7.3.

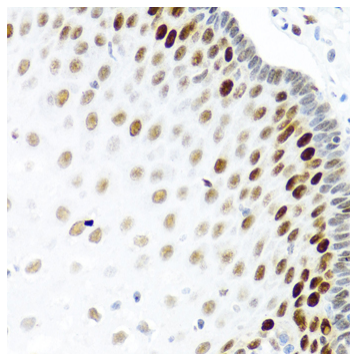
Validation Data



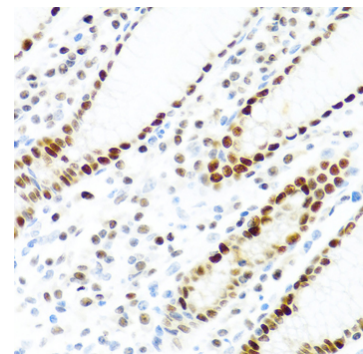
Western blot analysis of extracts of various cell lines, using KHDRBS2 antibody (A6102) at 1:1000 dilution. Secondary antibody: HRP Goat Anti-Rabbit IgG (H+L) (A5014) at 1:10000 dilution. Lysates/proteins: 25µg per lane. Blocking buffer: 3% nonfat dry milk in TBST. Detection: ECL Enhanced Kit (RM00021). Exposure time: 30s.



Immunohistochemistry analysis of paraffin-embedded human prostate cancer using KHDRBS2 antibody (A6102) at dilution of 1:100 (40x lens). Perform microwave antigen retrieval with 10 mM PBS buffer pH 7.2 before commencing with IHC staining protocol.



Immunohistochemistry analysis of paraffin-embedded human esophagus using KHDRBS2 antibody (A6102) at dilution of 1:100 (40x lens). Perform microwave antigen retrieval with 10 mM PBS buffer pH 7.2 before commencing with IHC staining protocol.



Immunohistochemistry analysis of paraffin-embedded human stomach using KHDRBS2 antibody (A6102) at dilution of 1:100 (40x lens). Perform microwave antigen retrieval with 10 mM PBS buffer pH 7.2 before commencing with IHC staining protocol.