

A5819

Leader in Biomolecular Solutions for Life Science



FADD Rabbit pAb

Catalog No.: A5819

9 Publications

Basic Information

Observed MW

26kDa

Calculated MW

23kDa

Category

Polyclonal Antibody

Applications

WB,IP,ELISA

Cross-Reactivity

Human,Mouse,Rat

Background

The protein encoded by this gene is an adaptor molecule that interacts with various cell surface receptors and mediates cell apoptotic signals. Through its C-terminal death domain, this protein can be recruited by TNFRSF6/Fas-receptor, tumor necrosis factor receptor, TNFRSF25, and TNFSF10/TRAIL-receptor, and thus it participates in the death signaling initiated by these receptors. Interaction of this protein with the receptors unmasks the N-terminal effector domain of this protein, which allows it to recruit caspase-8, and thereby activate the cysteine protease cascade. Knockout studies in mice also suggest the importance of this protein in early T cell development.

Recommended Dilutions

WB 1:500 - 1:2000

IP 0.5µg-4µg antibody for
200µg-400µg extracts of
whole cells

Immunogen Information

Gene ID

8772

Swiss Prot

Q13158

Immunogen

Recombinant fusion protein containing a sequence corresponding to amino acids 1-208 of human FADD (NP_003815.1).

Synonyms

GIG3; IMD90; MORT1; FADD

Contact



www.abclonal.com

Product Information

Source

Rabbit

Isotype

IgG

Purification

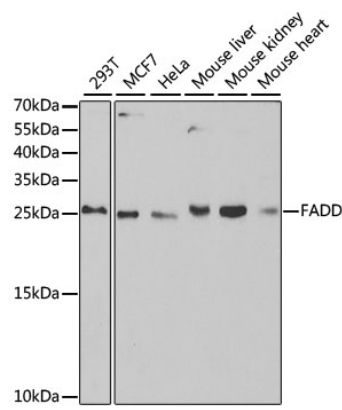
Affinity purification

Storage

Store at -20°C. Avoid freeze / thaw cycles.

Buffer: PBS with 0.01% thimerosal, 50% glycerol, pH7.3.

Validation Data



Western blot analysis of various lysates using FADD Rabbit pAb (A5819) at 1:1000 dilution.
Secondary antibody: HRP Goat Anti-Rabbit IgG (H+L) (A5014) at 1:10000 dilution.
Lysates/proteins: 25µg per lane.
Blocking buffer: 3% nonfat dry milk in TBST.
Detection: ECL Basic Kit (RM00020).

Immunoprecipitation analysis of 200 µg extracts of HeLa cells using 3 µg FADD antibody (A5819). Western blot was performed from the immunoprecipitate using FADD antibody (A5819) at a dilution of 1:1000.

