

A5691

Leader in Biomolecular Solutions for Life Science



GST3/GSTP1 Rabbit pAb

Catalog No.: A5691

8 Publications

Basic Information

Observed MW

25kDa

Calculated MW

23kDa

Category

Mouse Monoclonal Antibody

Applications

WB, IHC-P, IF/ICC, ELISA

Cross-Reactivity

Human, Mouse

Background

Glutathione S-transferases (GSTs) are a family of enzymes that play an important role in detoxification by catalyzing the conjugation of many hydrophobic and electrophilic compounds with reduced glutathione. Based on their biochemical, immunologic, and structural properties, the soluble GSTs are categorized into 4 main classes: alpha, mu, pi, and theta. This GST family member is a polymorphic gene encoding active, functionally different GSTP1 variant proteins that are thought to function in xenobiotic metabolism and play a role in susceptibility to cancer, and other diseases.

Recommended Dilutions

| | |
|--------|----------------|
| WB | 1:500 - 1:2000 |
| IHC-P | 1:50 - 1:200 |
| IF/ICC | 1:50 - 1:200 |

Immunogen Information

Gene ID

2950

Swiss Prot

P09211

Immunogen

Recombinant fusion protein containing a sequence corresponding to amino acids 1-210 of human GST3/GST3/GSTP1 (NP_000843.1).

Synonyms

PI; DFN7; GST3; GSTP; FAEES3; HEL-S-22; GST3/GSTP1

Contact



www.abclonal.com

Product Information

Source

Rabbit

Isotype

IgG

Purification

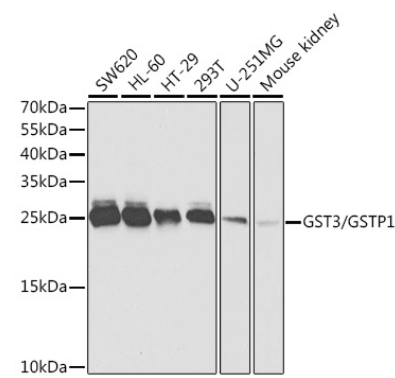
Affinity purification

Storage

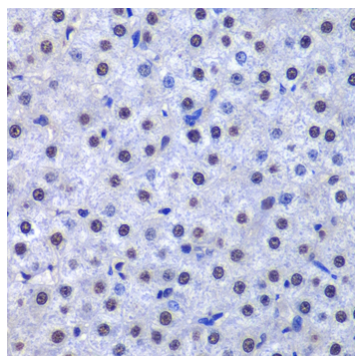
Store at -20°C. Avoid freeze / thaw cycles.

Buffer: PBS with 0.02% sodium azide, 50% glycerol, pH 7.3.

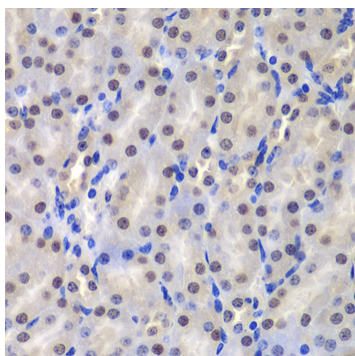
Validation Data



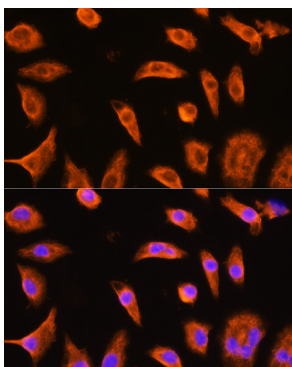
Western blot analysis of extracts of various cell lines, using GST3/GST3/GSTP1 antibody (A5691) at 1:1000 dilution.
Secondary antibody: HRP Goat Anti-Rabbit IgG (H+L) (AS014) at 1:10000 dilution.
Lysates/proteins: 25µg per lane.
Blocking buffer: 3% nonfat dry milk in TBST.
Detection: ECL Basic Kit (RM00020).
Exposure time: 5s.



Immunohistochemistry analysis of paraffin-embedded human liver cancer using GST3/GST3/GSTP1 antibody (A5691) at dilution of 1:200 (40x lens). Perform microwave antigen retrieval with 10 mM PBS buffer pH 7.2 before commencing with IHC staining protocol.



Immunohistochemistry analysis of paraffin-embedded mouse kidney using GST3/GST3/GSTP1 antibody (A5691) at dilution of 1:200 (40x lens). Perform microwave antigen retrieval with 10 mM PBS buffer pH 7.2 before commencing with IHC staining protocol.



Immunofluorescence analysis of L929 cells using GST3/GST3/GSTP1 Rabbit pAb (A5691) at dilution of 1:100 (40x lens). Blue: DAPI for nuclear staining.