

A5327

Leader in Biomolecular Solutions for Life Science



REG1A Rabbit pAb

Catalog No.: A5327

Basic Information

Observed MW

25kDa

Calculated MW

19kDa

Category

Polyclonal Antibody

Applications

WB, ELISA

Cross-Reactivity

Human, Mouse, Rat

Background

This gene is a type I subclass member of the Reg gene family. The Reg gene family is a multigene family grouped into four subclasses, types I, II, III and IV, based on the primary structures of the encoded proteins. This gene encodes a protein that is secreted by the exocrine pancreas. It is associated with islet cell regeneration and diabetogenesis and may be involved in pancreatic lithogenesis. Reg family members REG1B, REGL, PAP and this gene are tandemly clustered on chromosome 2p12 and may have arisen from the same ancestral gene by gene duplication.

Recommended Dilutions

WB 1:500 - 1:2000

Immunogen Information

Gene ID

5967

Swiss Prot

P05451

Immunogen

A synthetic peptide corresponding to a sequence within amino acids 50-150 of human REG1A (NP_002900.2).

Synonyms

P19; PSP; PTP; REG; ICRF; PSPS; PSPS1; REG1A

Contact



www.abclonal.com

Product Information

Source

Rabbit

Isotype

IgG

Purification

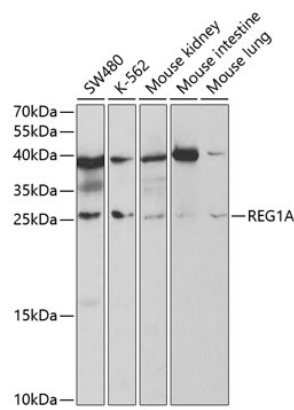
Affinity purification

Storage

Store at -20°C. Avoid freeze / thaw cycles.

Buffer: PBS with 0.01% thimerosal, 50% glycerol, pH 7.3.

Validation Data



Western blot analysis of extracts of various cell lines, using REG1A antibody (A5327) at 1:1000 dilution. Secondary antibody: HRP Goat Anti-Rabbit IgG (H+L) (AS014) at 1:10000 dilution. Lysates/proteins: 25µg per lane. Blocking buffer: 3% nonfat dry milk in TBST. Detection: ECL Basic Kit (RM00020). Exposure time: 60s.