

A5160

Leader in Biomolecular Solutions for Life Science



UBE2F Rabbit pAb

Catalog No.: A5160

Basic Information

Observed MW

21kDa

Calculated MW

21kDa

Category

Polyclonal Antibody

Applications

WB,IHC-P,IF/ICC,ELISA

Cross-Reactivity

Human,Mouse,Rat

Background

Enables NEDD8 conjugating enzyme activity. Involved in protein neddylation. Predicted to be located in cytosol. Predicted to be active in nucleus.

Recommended Dilutions

WB	1:500 - 1:2000
IHC-P	1:50 - 1:200
IF/ICC	1:50 - 1:200

Immunogen Information

Gene ID

140739

Swiss Prot

Q969M7

Immunogen

Recombinant fusion protein containing a sequence corresponding to amino acids 1-185 of human UBE2F (NP_542409.1).

Synonyms

NCE2; UBE2F

Contact



www.abclonal.com

Product Information

Source

Rabbit

Isotype

IgG

Purification

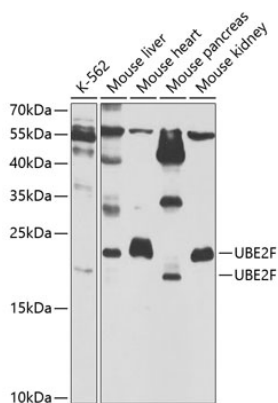
Affinity purification

Storage

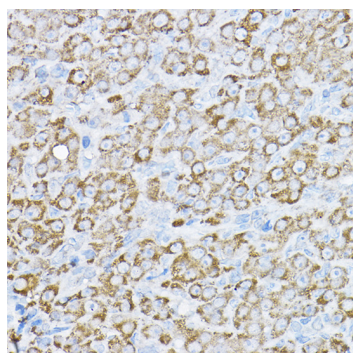
Store at -20°C. Avoid freeze / thaw cycles.

Buffer: PBS with 0.02% sodium azide,50% glycerol,pH7.3.

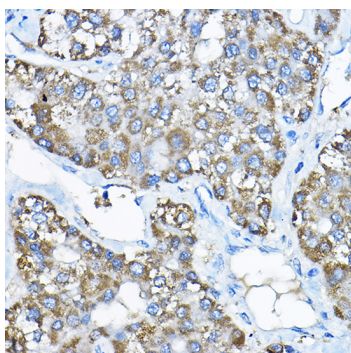
Validation Data



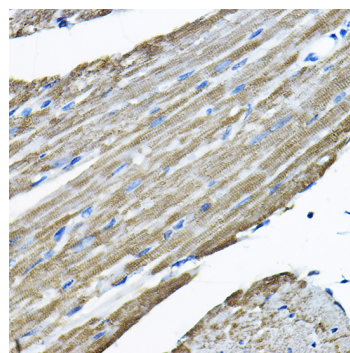
Western blot analysis of extracts of various cell lines, using UBE2F antibody (A5160) at 1:1000 dilution.
 Secondary antibody: HRP Goat Anti-Rabbit IgG (H+L) (A5014) at 1:10000 dilution.
 Lysates/proteins: 25µg per lane.
 Blocking buffer: 3% nonfat dry milk in TBST.
 Detection: ECL Basic Kit (RM00020).
 Exposure time: 90s.



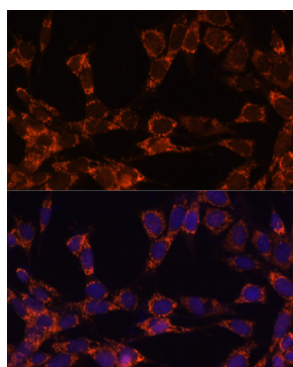
Immunohistochemistry analysis of paraffin-embedded rat ovary using UBE2F Rabbit pAb (A5160) at dilution of 1:200 (40x lens). Perform high pressure antigen retrieval with 10 mM citrate buffer pH 6.0 before commencing with IHC staining protocol.



Immunohistochemistry analysis of paraffin-embedded human liver cancer using UBE2F Rabbit pAb (A5160) at dilution of 1:200 (40x lens). Perform high pressure antigen retrieval with 10 mM citrate buffer pH 6.0 before commencing with IHC staining protocol.



Immunohistochemistry analysis of paraffin-embedded mouse heart using UBE2F Rabbit pAb (A5160) at dilution of 1:200 (40x lens). Perform high pressure antigen retrieval with 10 mM citrate buffer pH 6.0 before commencing with IHC staining protocol.



Immunofluorescence analysis of NIH-3T3 cells using UBE2F antibody (A5160) at dilution of 1:100. Blue: DAPI for nuclear staining.