

A4358

Leader in Biomolecular Solutions for Life Science



## GNPDA1 Mouse mAb

Catalog No.: A4358

### Basic Information

#### Observed MW

31kDa

#### Calculated MW

33kDa

#### Category

SMab Recombinant Monoclonal Antibody

#### Applications

WB, ELISA

#### Cross-Reactivity

Mouse

### Background

Glucosamine-6-phosphate deaminase (EC 3.5.99.6) is an allosteric enzyme that catalyzes the reversible conversion of D-glucosamine-6-phosphate into D-fructose-6-phosphate and ammonium (Arreola et al., 2003 [PubMed 12965206]).

### Recommended Dilutions

WB 1:500 - 1:1000

### Immunogen Information

#### Gene ID

10007

#### Swiss Prot

P46926

#### Immunogen

A synthetic Peptide of human GNPDA1

#### Synonyms

GPI; HLN; GNP1; GNPI; GNPDA; GNPDA1

### Contact



[www.abclonal.com](http://www.abclonal.com)

### Product Information

#### Source

Mouse

#### Isotype

IgG

#### Purification

Affinity purification

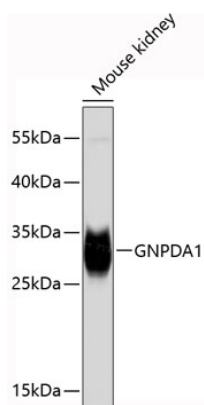
#### Storage

Store at 4°C. Avoid freeze / thaw cycles.

Buffer: PBS with 0.02% sodium azide, pH 7.3.

## Validation Data

---



Western blot analysis of lysates from mouse kidney, using GNPDA1 Mouse mAb (A4358).  
Secondary antibody: HRP Goat Anti-Mouse IgG (H+L) (AS003) at 1:10000 dilution.  
Lysates/proteins: 25µg per lane.  
Blocking buffer: 3% nonfat dry milk in TBST.