

A4314

Leader in Biomolecular Solutions for Life Science



EEF1E1 Mouse mAb

Catalog No.: A4314

Basic Information

Observed MW

20kDa

Calculated MW

20kDa

Category

SMab Recombinant Monoclonal Antibody

Applications

WB,IF/ICC,FC,ELISA

Cross-Reactivity

Human,Mouse

Background

This gene encodes a multifunctional protein that localizes to both the cytoplasm and nucleus. In the cytoplasm, the encoded protein is an auxiliary component of the macromolecular aminoacyl-tRNA synthase complex. However, its mouse homolog has been shown to translocate to the nucleus in response to DNA damage, and it plays a positive role in ATM/ATR-mediated p53 activation. Alternative splicing results in multiple transcript variants. Read-through transcription also exists between this gene and the neighboring downstream MUTED (muted homolog) gene. An EEF1E1-related pseudogene has been identified on chromosome 2.

Recommended Dilutions

WB	1:500 - 1:1000
IF/ICC	1:20 - 1:50
FC	1:20 - 1:50

Immunogen Information

Gene ID

9521

Swiss Prot

O43324

Immunogen

A synthetic peptide of human EEF1E1

Synonyms

P18; AIMP3; EEF1E1

Contact



www.abclonal.com

Product Information

Source

Mouse

Isotype

IgG

Purification

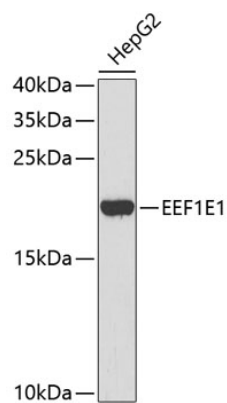
Affinity purification

Storage

Store at 4°C. Avoid freeze / thaw cycles.

Buffer: PBS with 0.02% sodium azide,pH7.3.

Validation Data



Western blot analysis of lysates from HepG2 cells, using EEF1E1 Mouse mAb (A4314).
Secondary antibody: HRP Goat Anti-Mouse IgG (H+L) (AS003) at 1:10000 dilution.
Lysates/proteins: 25µg per lane.
Blocking buffer: 3% nonfat dry milk in TBST.