

A3885

Leader in Biomolecular Solutions for Life Science



## Glutaminase (GLS) Rabbit pAb

Catalog No.: A3885

2 Publications

### Basic Information

#### Observed MW

65-73kDa

#### Calculated MW

73kDa

#### Category

Polyclonal Antibody

#### Applications

WB,IF/ICC,ELISA

#### Cross-Reactivity

Human,Mouse,Rat

### Background

This gene encodes the K-type mitochondrial glutaminase. The encoded protein is an phosphate-activated amidohydrolase that catalyzes the hydrolysis of glutamine to glutamate and ammonia. This protein is primarily expressed in the brain and kidney plays an essential role in generating energy for metabolism, synthesizing the brain neurotransmitter glutamate and maintaining acid-base balance in the kidney. Alternate splicing results in multiple transcript variants.

### Recommended Dilutions

WB	1:500 - 1:1000
IF/ICC	1:50 - 1:200

### Immunogen Information

#### Gene ID

2744

#### Swiss Prot

O94925

#### Immunogen

Recombinant fusion protein containing a sequence corresponding to amino acids 610-669 of human Glutaminase (Glutaminase (GLS)) (NP\_055720.3).

#### Synonyms

GAC; GAM; KGA; GLS1; AAD20; DEE71; GDPAG; CASGID; EIEE71; Glutaminase (GLS)

### Contact



[www.abclonal.com](http://www.abclonal.com)

### Product Information

#### Source

Rabbit

#### Isotype

IgG

#### Purification

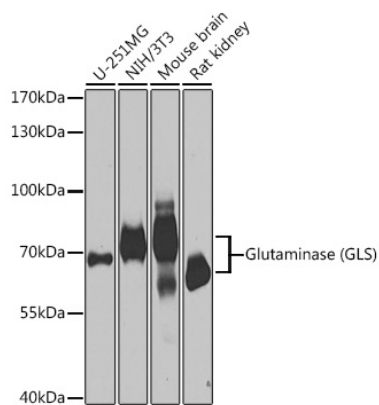
Affinity purification

#### Storage

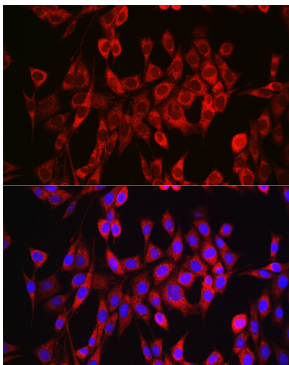
Store at -20°C. Avoid freeze / thaw cycles.

Buffer: PBS with 0.05% proclin300,50% glycerol,pH7.3.

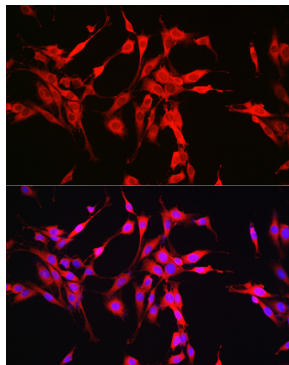
## Validation Data



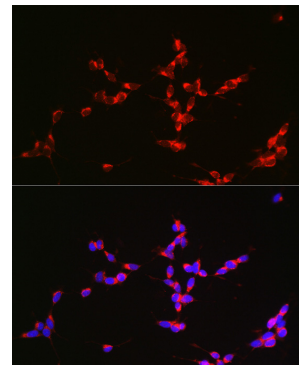
Western blot analysis of extracts of various cell lines, using Glutaminase (Glutaminase (GLS)) antibody (A3885) at 1:1000 dilution.  
Secondary antibody: HRP Goat Anti-Rabbit IgG (H+L) (AS014) at 1:10000 dilution.  
Lysates/proteins: 25µg per lane.  
Blocking buffer: 3% nonfat dry milk in TBST.  
Detection: ECL Basic Kit (RM00020).  
Exposure time: 30s.



Immunofluorescence analysis of NIH/3T3 cells using Glutaminase (GLS) antibody (A3885) at dilution of 1:150. Blue: DAPI for nuclear staining.



Immunofluorescence analysis of PC-12 cells using Glutaminase (GLS) antibody (A3885) at dilution of 1:150. Blue: DAPI for nuclear staining.



Immunofluorescence analysis of SH-SY5Y cells using Glutaminase (GLS) antibody (A3885) at dilution of 1:150. Blue: DAPI for nuclear staining.