

A3612

Leader in Biomolecular Solutions for Life Science



## LRP2 Rabbit pAb

Catalog No.: A3612

### Basic Information

**Observed MW**

522kDa

**Calculated MW**

522kDa

**Category**

Polyclonal Antibody

**Applications**

WB, IHC-P, ELISA

**Cross-Reactivity**

Mouse, Rat

### Background

The protein encoded by this gene, low density lipoprotein-related protein 2 (LRP2) or megalin, is a multi-ligand endocytic receptor that is expressed in many different tissues but primarily in absorptive epithelial tissues such as the kidney. This glycoprotein has a large amino-terminal extracellular domain, a single transmembrane domain, and a short carboxy-terminal cytoplasmic tail. The extracellular ligand-binding-domains bind diverse macromolecules including albumin, apolipoproteins B and E, and lipoprotein lipase. The LRP2 protein is critical for the reuptake of numerous ligands, including lipoproteins, sterols, vitamin-binding proteins, and hormones. This protein also has a role in cell-signaling; extracellular ligands include parathyroid hormones and the morphogen sonic hedgehog while cytosolic ligands include MAP kinase scaffold proteins and JNK interacting proteins. Recycling of this membrane receptor is regulated by phosphorylation of its cytoplasmic domain. Mutations in this gene cause Donnai-Barrow syndrome (DBS) and facio-oculoacoustico-renal syndrome (FOAR).

### Recommended Dilutions

WB	1:200 - 1:1000
IHC-P	1:20 - 1:100

### Immunogen Information

**Gene ID**

4036

**Swiss Prot**

P98164

**Immunogen**

Recombinant fusion protein containing a sequence corresponding to amino acids 4446-4655 of human LRP2 (NP\_004516.2).

**Synonyms**

DBS; GP330; LRP-2; LRP2

### Contact



[www.abclonal.com](http://www.abclonal.com)

### Product Information

**Source**

Rabbit

**Isotype**

IgG

**Purification**

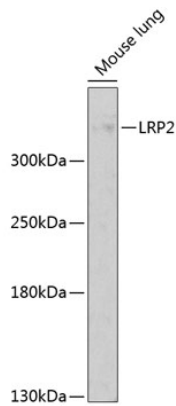
Affinity purification

**Storage**

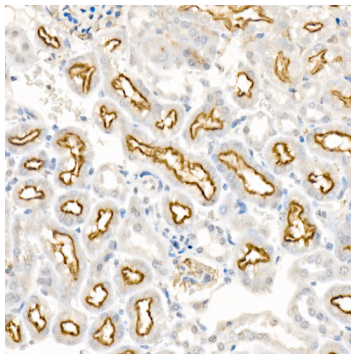
Store at -20°C. Avoid freeze / thaw cycles.

Buffer: PBS with 0.02% sodium azide, 50% glycerol, pH 7.3.

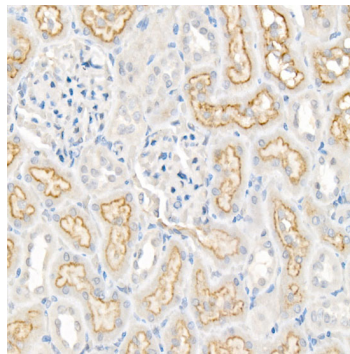
## Validation Data



Western blot analysis of extracts of mouse lung, using LRP2 antibody (A3612) at 1:1000 dilution.  
Secondary antibody: HRP Goat Anti-Rabbit IgG (H+L) (A5014) at 1:10000 dilution.  
Lysates/proteins: 25µg per lane.  
Blocking buffer: 3% nonfat dry milk in TBST.  
Detection: ECL Basic Kit (RM00020).  
Exposure time: 20s.



Immunohistochemistry analysis of paraffin-embedded mouse kidney using LRP2 Rabbit pAb (A3612) at dilution of 1:100 (40x lens). Perform high pressure antigen retrieval with 10 mM citrate buffer pH 6.0 before commencing with IHC staining protocol.



Immunohistochemistry analysis of paraffin-embedded rat kidney using LRP2 Rabbit pAb (A3612) at dilution of 1:100 (40x lens). Perform high pressure antigen retrieval with 10 mM citrate buffer pH 6.0 before commencing with IHC staining protocol.