

A3351

Leader in Biomolecular Solutions for Life Science



## Cyclin B2 Rabbit pAb

Catalog No.: A3351 **3 Publications**

### Basic Information

#### Observed MW

45kDa

#### Calculated MW

45kDa

#### Category

Mouse Monoclonal Antibody

#### Applications

WB, IHC-P, ELISA

#### Cross-Reactivity

Human, Mouse, Rat

### Background

Cyclin B2 is a member of the cyclin family, specifically the B-type cyclins. The B-type cyclins, B1 and B2, associate with p34cdc2 and are essential components of the cell cycle regulatory machinery. B1 and B2 differ in their subcellular localization. Cyclin B1 co-localizes with microtubules, whereas cyclin B2 is primarily associated with the Golgi region. Cyclin B2 also binds to transforming growth factor beta RII and thus cyclin B2/cdc2 may play a key role in transforming growth factor beta-mediated cell cycle control.

### Recommended Dilutions

WB	1:500 - 1:2000
IHC-P	1:100 - 1:200

### Immunogen Information

#### Gene ID

9133

#### Swiss Prot

O95067

#### Immunogen

Recombinant fusion protein containing a sequence corresponding to amino acids 1-100 of human Cyclin B2 (NP\_004692.1).

#### Synonyms

HsT17299; Cyclin B2

### Contact



[www.abclonal.com](http://www.abclonal.com)

### Product Information

#### Source

Rabbit

#### Isotype

IgG

#### Purification

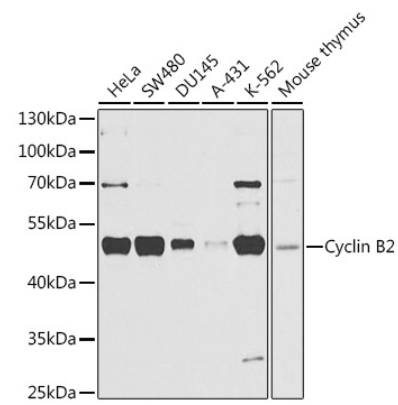
Affinity purification

#### Storage

Store at -20°C. Avoid freeze / thaw cycles.

Buffer: PBS with 0.02% sodium azide, 50% glycerol, pH 7.3.

Validation Data



Western blot analysis of extracts of various cell lines, using Cyclin B2 antibody (A3351) at 1:1000 dilution.  
Secondary antibody: HRP Goat Anti-Rabbit IgG (H+L) (A5014) at 1:10000 dilution.  
Lysates/proteins: 25µg per lane.  
Blocking buffer: 3% nonfat dry milk in TBST.  
Detection: ECL Basic Kit (RM00020).  
Exposure time: 30s.