

# Folate Binding Protein(FBP) / FOLR1 Rabbit pAb

Catalog No.: A3215 **1 Publications**

## Basic Information

### Observed MW

36kDa

### Calculated MW

30kDa

### Category

Primary antibody

### Applications

WB,FC

### Cross-Reactivity

Human

## Background

The protein encoded by this gene is a member of the folate receptor family. Members of this gene family bind folic acid and its reduced derivatives, and transport 5-methyltetrahydrofolate into cells. This gene product is a secreted protein that either anchors to membranes via a glycosyl-phosphatidylinositol linkage or exists in a soluble form. Mutations in this gene have been associated with neurodegeneration due to cerebral folate transport deficiency. Due to the presence of two promoters, multiple transcription start sites, and alternative splicing, multiple transcript variants encoding the same protein have been found for this gene.

## Recommended Dilutions

<b>WB</b>	1:500 - 1:1000
<b>FC</b>	1:20 - 1:50

## Immunogen Information

<b>Gene ID</b>	<b>Swiss Prot</b>
2348	P15328

### Immunogen

A synthetic peptide of human Folate Binding Protein(FBP) / FOLR1

### Synonyms

FBP; FOLR; NCFTD; FRalpha; Folate Binding Protein(FBP) / FOLR1

## Contact

 | [www.abclonal.com](http://www.abclonal.com)

## Product Information

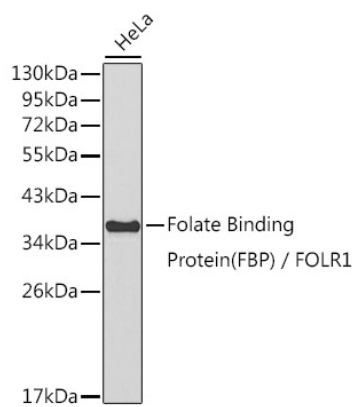
<b>Source</b>	<b>Isotype</b>	<b>Purification</b>
Rabbit	IgG	Affinity purification

### Storage

Store at 4°C. Avoid freeze / thaw cycles.

Buffer: PBS with 0.02% sodium azide,pH7.3.

# Validation Data



Western blot analysis of extracts of HeLa cells, using Folate Binding Protein(FBP) / FOLR1 antibody (A3215).  
Secondary antibody: HRP Goat Anti-Rabbit IgG (H+L) (A5014) at 1:10000 dilution.  
Lysates/proteins: 25µg per lane.  
Blocking buffer: 3% nonfat dry milk in TBST.