

A3043

Leader in Biomolecular Solutions for Life Science



14-3-3 gamma Rabbit pAb

Catalog No.: A3043

Basic Information

Observed MW

28kDa/

Calculated MW

28kDa

Category

Polyclonal Antibody

Applications

WB,IHC-P,ELISA

Cross-Reactivity

Human,Mouse,Rat

Background

This gene product belongs to the 14-3-3 family of proteins which mediate signal transduction by binding to phosphoserine-containing proteins. This highly conserved protein family is found in both plants and mammals, and this protein is 100% identical to the rat ortholog. It is induced by growth factors in human vascular smooth muscle cells, and is also highly expressed in skeletal and heart muscles, suggesting an important role for this protein in muscle tissue. It has been shown to interact with RAF1 and protein kinase C, proteins involved in various signal transduction pathways.

Recommended Dilutions

WB	1:500 - 1:2000
IHC-P	1:50 - 1:200

Immunogen Information

Gene ID

7532

Swiss Prot

P61981

Immunogen

A synthetic peptide corresponding to a sequence within amino acids 100-200 of human 14-3-3 gamma (NP_036611.2).

Synonyms

DEE56; EIEE56; PPP1R170; 14-3-3GAMMA; 14-3-3 gamma

Contact



www.abclonal.com

Product Information

Source

Rabbit

Isotype

IgG

Purification

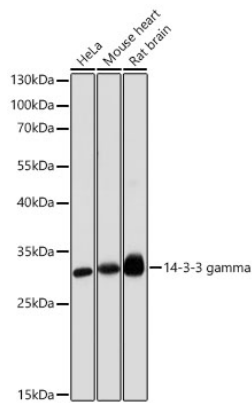
Affinity purification

Storage

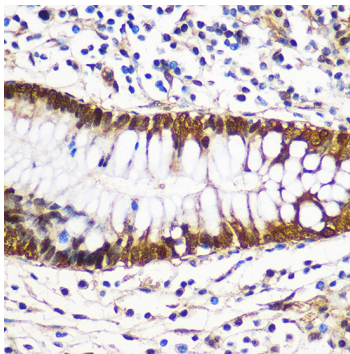
Store at -20°C. Avoid freeze / thaw cycles.

Buffer: PBS with 0.01% thimerosal,50% glycerol,pH7.3.

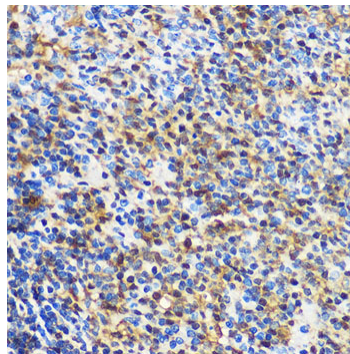
Validation Data



Western blot analysis of various lysates using 14-3-3 gamma Rabbit pAb (A3043) at 1:1000 dilution. Secondary antibody: HRP Goat Anti-Rabbit IgG (H+L) (AS014) at 1:10000 dilution. Lysates / proteins: 25 µg per lane. Blocking buffer: 3 % nonfat dry milk in TBST. Detection: ECL Basic Kit (RM00020). Exposure time: 1s.



Immunohistochemistry analysis of 14-3-3 gamma in paraffin-embedded Human colon using 14-3-3 gamma Rabbit pAb (A3043) at dilution of 1:100 (40x lens). Perform microwave antigen retrieval with 10 mM PBS buffer pH 7.2 before commencing with IHC staining protocol.



Immunohistochemistry analysis of 14-3-3 gamma in paraffin-embedded Rat spleen using 14-3-3 gamma Rabbit pAb (A3043) at dilution of 1:100 (40x lens). Perform microwave antigen retrieval with 10 mM PBS buffer pH 7.2 before commencing with IHC staining protocol.