

## ACTA2 Monoclonal Antibody

<b>Catalog No</b>	A2625	<b>Category</b>	Monoclonal Antibodies
<b>Applications</b>	WB,IHC,ICC,FC	<b>Observed MW</b>	42kDa
<b>Cross-Reactivity</b>	Human,Mouse,Rat	<b>Calculated MW</b>	42kDa

### Immunogen Information

<b>Immunogen</b>	A synthetic peptide of human ACTA2
<b>Gene ID</b>	59
<b>Swiss Prot</b>	P62736
<b>Synonyms</b>	AAT6,ACTSA,MYMY5

### Product information

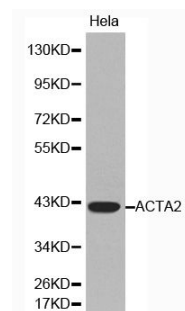
<b>Source</b>	Mouse
<b>Isotype</b>	IgG
<b>Purity</b>	Affinity purification
<b>Storage</b>	Store at -20°C. Avoid freeze / thaw cycles. Buffer: PBS with 0.02% sodium azide, 50% glycerol, pH7.3.

### Background

The protein encoded by this gene belongs to the actin family of proteins, which are highly conserved proteins that play a role in cell motility, structure and integrity. Alpha, beta and gamma actin isoforms have been identified, with alpha actins being a major constituent of the contractile apparatus, while beta and gamma actins are involved in the regulation of cell motility. This actin is an alpha actin that is found in skeletal muscle. Defects in this gene cause aortic aneurysm familial thoracic type 6. Multiple alternatively spliced variants, encoding the same protein, have been identified.

### Recommended Dilutions

WB	1:500 - 1:2000
IHC	1:50 - 1:200
ICC	1:50 - 1:200
FC	1:50 - 1:200



Western blot analysis of extracts of HeLa cells, using ACTA2 antibody (A2625).  
Secondary antibody: HRP Goat Anti-Mouse IgG (H+L) (AS003) at 1:10000 dilution.  
Lysates/proteins: 25ug per lane.  
Blocking buffer: 3% nonfat dry milk in TBST.