

A2582

Leader in Biomolecular Solutions for Life Science



LAMP1 Rabbit pAb

Catalog No.: A2582

16 Publications

Basic Information

Observed MW

90-120kDa

Calculated MW

45kDa

Category

Polyclonal Antibody

Applications

WB, ELISA

Cross-Reactivity

Human

Background

The protein encoded by this gene is a member of a family of membrane glycoproteins. This glycoprotein provides selectins with carbohydrate ligands. It may also play a role in tumor cell metastasis.

Recommended Dilutions

WB 1:500 - 1:1000

Immunogen Information

Gene ID

3916

Swiss Prot

P11279

Immunogen

A synthetic peptide corresponding to a sequence within amino acids 150-250 of human LAMP1 (NP_005552.3).

Synonyms

LAMPA; CD107a; LGP120; LAMP1

Contact



www.abclonal.com

Product Information

Source

Rabbit

Isotype

IgG

Purification

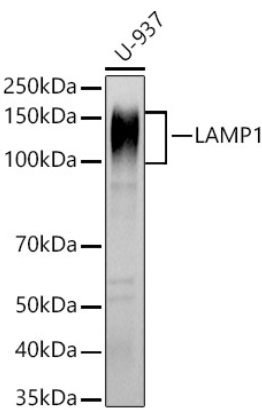
Affinity purification

Storage

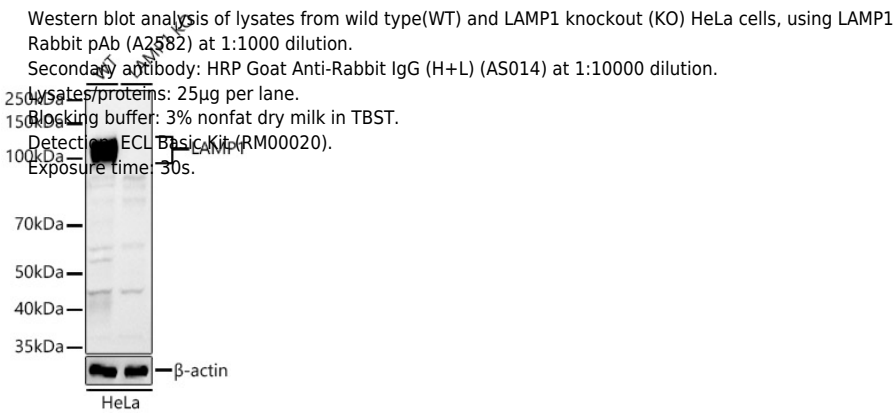
Store at -20°C. Avoid freeze / thaw cycles.

Buffer: PBS with 0.01% thimerosal, 50% glycerol, pH 7.3.

Validation Data



Western blot analysis of lysates from U-937 cells, using LAMP1 Rabbit pAb (A2582) at 1:1000 dilution.
Secondary antibody: HRP Goat Anti-Rabbit IgG (H+L) (AS014) at 1:10000 dilution.
Lysates/proteins: 25µg per lane.
Blocking buffer: 3% nonfat dry milk in TBST.
Detection: ECL Basic Kit (RM00020).
Exposure time: 30s.



Western blot analysis of lysates from wild type(WT) and LAMP1 knockout (KO) HeLa cells, using LAMP1 Rabbit pAb (A2582) at 1:1000 dilution.
Secondary antibody: HRP Goat Anti-Rabbit IgG (H+L) (AS014) at 1:10000 dilution.
Lysates/proteins: 25µg per lane.
Blocking buffer: 3% nonfat dry milk in TBST.
Detection: ECL Basic Kit (RM00020).
Exposure time: 30s.