

A2575

Leader in Biomolecular Solutions for Life Science



## MEK6 Rabbit pAb

Catalog No.: A2575

2 Publications

### Basic Information

#### Observed MW

37kDa

#### Calculated MW

37kDa

#### Category

Polyclonal Antibody

#### Applications

WB,IF/ICC,ELISA

#### Cross-Reactivity

Human,Mouse,Rat

### Background

This gene encodes a member of the dual specificity protein kinase family, which functions as a mitogen-activated protein (MAP) kinase kinase. MAP kinases, also known as extracellular signal-regulated kinases (ERKs), act as an integration point for multiple biochemical signals. This protein phosphorylates and activates p38 MAP kinase in response to inflammatory cytokines or environmental stress. As an essential component of p38 MAP kinase mediated signal transduction pathway, this gene is involved in many cellular processes such as stress induced cell cycle arrest, transcription activation and apoptosis.

### Recommended Dilutions

WB 1:500 - 1:2000

IF/ICC 1:50 - 1:200

### Immunogen Information

#### Gene ID

5608

#### Swiss Prot

P52564

#### Immunogen

Recombinant fusion protein containing a sequence corresponding to amino acids 1-334 of human MEK6 (NP\_002749.2).

#### Synonyms

MEK6; MKK6; MAPKK6; PRKMK6; SAPKK3; SAPKK-3

### Contact



[www.abclonal.com](http://www.abclonal.com)

### Product Information

#### Source

Rabbit

#### Isotype

IgG

#### Purification

Affinity purification

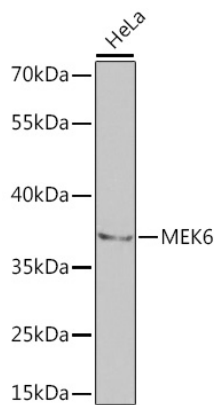
#### Storage

Store at -20°C. Avoid freeze / thaw cycles.

Buffer: PBS with 0.02% sodium azide, 50% glycerol, pH7.3.

## Validation Data

---

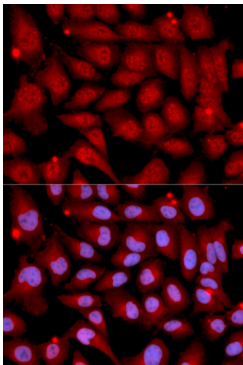


Western blot analysis of extracts of HeLa cells, using MEK6 antibody (A2575) at 1:1000 dilution.

Secondary antibody: HRP Goat Anti-Rabbit IgG (H+L) (AS014) at 1:10000 dilution.

Lysates/proteins: 25µg per lane.

Blocking buffer: 3% nonfat dry milk in TBST.



Immunofluorescence analysis of U2OS cells using MEK6 antibody (A2575). Blue: DAPI for nuclear staining.