

RELA Polyclonal Antibody

Catalog No	A2547	Category	Polyclonal Antibodies
Applications	WB,IHC,IF	Observed MW	70kDa
Cross-Reactivity	Human,Rat	Calculated MW	58kDa/59kDa/60kDa

Immunogen Information

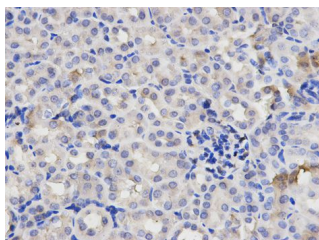
Immunogen	Recombinant fusion protein containing a sequence corresponding to amino acids 50-180 of human RELA (NP_068810.3).
Gene ID	5970
Swiss Prot	Q04206
Synonyms	NFKB3,p65

Product information

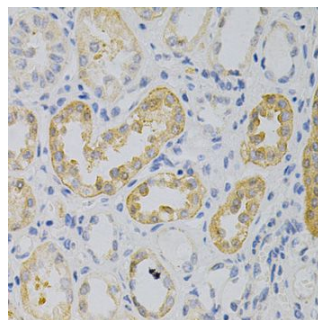
Source	Rabbit
Isotype	IgG
Purity	Affinity purification
Storage	Store at -20°C. Avoid freeze / thaw cycles. Buffer: PBS with 0.02% sodium azide, 50% glycerol, pH7.3.

Background

NF-kappa-B is a ubiquitous transcription factor involved in several biological processes. It is held in the cytoplasm in an inactive state by specific inhibitors. Upon degradation of the inhibitor, NF-kappa-B moves to the nucleus and activates transcription of specific genes. NF-kappa-B is composed of NFKB1 or NFKB2 bound to either REL, RELA, or RELB. The most abundant form of NF-kappa-B is NFKB1 complexed with the product of this gene, RELA. Four transcript variants encoding different isoforms have been found for this gene.



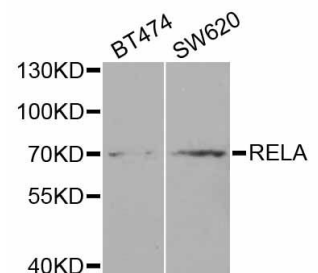
Immunohistochemistry of paraffin-embedded rat kidney using RELA Antibody (A2547) at dilution of 1:100 (40x lens).



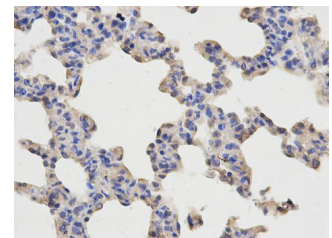
Immunohistochemistry of paraffin-embedded human kidney cancer using RELA Antibody (A2547) at dilution of 1:200 (40x lens).

Recommended Dilutions

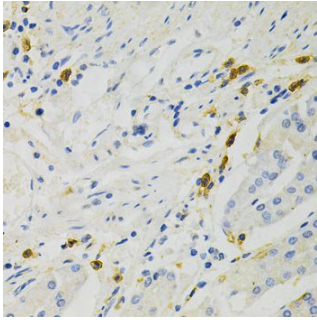
WB	1:500 - 1:2000
IHC	1:50 - 1:200
IF	1:50 - 1:200



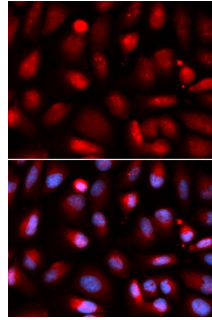
Western blot analysis of extracts of various cell lines, using RELA antibody (A2547) at 1:1000 dilution. Secondary antibody: HRP Goat Anti-Rabbit IgG (H+L) (AS014) at 1:10000 dilution. Lysates/proteins: 25ug per lane. Blocking buffer: 3% nonfat dry milk in TBST.



Immunohistochemistry of paraffin-embedded rat lung using RELA Antibody (A2547) at dilution of 1:100 (40x lens).



Immunohistochemistry of paraffin-embedded human stomach using RELA Antibody (A2547) at dilution of 1:200 (40x lens).



Immunofluorescence analysis of U2OS cells using RELA antibody (A2547).