

A25186

Leader in Biomolecular Solutions for Life Science



## ABflo® 594 Rabbit anti-Human CD162/PSGL-1 mAb

Catalog No.: A25186

### Basic Information

#### Observed MW

#### Calculated MW

43kDa/44kDa

#### Category

SMab Recombinant Monoclonal Antibody

#### Applications

FC

#### Cross-Reactivity

Human

#### CloneNo number

ARC55292-ABflo594

#### Conjugate

ABflo® 594. Ex:588nm. Em:604nm.

### Background

This gene encodes a glycoprotein that functions as a high affinity counter-receptor for the cell adhesion molecules P-, E- and L- selectin expressed on myeloid cells and stimulated T lymphocytes. As such, this protein plays a critical role in leukocyte trafficking during inflammation by tethering of leukocytes to activated platelets or endothelia expressing selectins. This protein requires two post-translational modifications, tyrosine sulfation and the addition of the sialyl Lewis x tetrasaccharide (sLex) to its O-linked glycans, for its high-affinity binding activity. Aberrant expression of this gene and polymorphisms in this gene are associated with defects in the innate and adaptive immune response. Alternate splicing results in multiple transcript variants.

### Recommended Dilutions

FC 5 µl per 10<sup>6</sup> cells in  
100 µl volume

### Immunogen Information

#### Gene ID

6404

#### Swiss Prot

Q14242

#### Immunogen

Recombinant fusion protein containing a sequence corresponding to amino acids 42-295 of human CD162/PSGL-1 (NP\_002997.2).

#### Synonyms

CLA; CD162; PSGL1; PSGL-1

### Contact



[www.abclonal.com](http://www.abclonal.com)

### Product Information

#### Source

Rabbit

#### Isotype

IgG

#### Purification

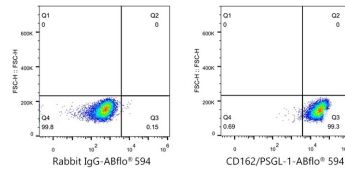
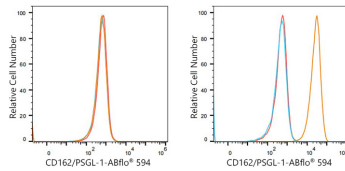
Affinity purification

#### Storage

Store at 2-8°C. Avoid freeze.

Buffer: PBS with 0.03% proclin300, 0.2% BSA, pH7.3.

## Validation Data



Flow cytometry:  $1 \times 10^6$  MCF7 cells (negative control, left) and Jurkat cells (right) were surface-stained with ABflo® 594 Rabbit anti-Human CD162/PSGL-1 mAb (A25186, 5  $\mu$ l/Test, orange line) or ABflo® 594 Rabbit IgG isotype control (A23821, 5  $\mu$ l/Test, blue line). Non-fluorescently stained cells were used as blank control (red line).

Flow cytometry:  $1 \times 10^6$  Jurkat cells were surface-stained with ABflo® 594 Rabbit IgG isotype control (A23821, 5  $\mu$ l/Test, left) or ABflo® 594 Rabbit anti-Human CD162/PSGL-1 mAb (A25186, 5  $\mu$ l/Test, right).