

A24671

Leader in Biomolecular Solutions for Life Science



## VEGFR2/KDR/Flk-1/CD309 Rabbit pAb

Catalog No.: A24671

### Basic Information

#### Observed MW

230kDa

#### Calculated MW

150kDa

#### Category

Polyclonal Antibody

#### Applications

WB, ELISA

#### Cross-Reactivity

Mouse

### Background

Enables growth factor binding activity and vascular endothelial growth factor-activated receptor activity. Involved in several processes, including circulatory system development; peptidyl-tyrosine autophosphorylation; and positive regulation of vasculogenesis. Acts upstream of or within several processes, including animal organ development; positive regulation of cell population proliferation; and vasculature development. Located in several cellular components, including cell junction; endosome; and external side of plasma membrane. Is expressed in several structures, including alimentary system; cardiovascular system; central nervous system; extraembryonic component; and genitourinary system. Human ortholog(s) of this gene implicated in several diseases, including adhesions of uterus; artery disease (multiple); gastrointestinal system cancer (multiple); macular degeneration (multiple); and pancreatic cancer (multiple). Orthologous to human KDR (kinase insert domain receptor).

### Recommended Dilutions

WB 1:500 - 1:1000

### Immunogen Information

#### Gene ID

16542

#### Swiss Prot

P35918

#### Immunogen

Recombinant fusion protein containing a sequence corresponding to amino acids 20-762 of mouse VEGFR2/KDR/Flk-1/CD309(NP\_034742.2).

#### Synonyms

orv; Flk1; Ly73; Flk-1; Krd-1; VEGFR2; VEGFR-2; sVEGFR-2; 6130401C07; VEGFR2/KDR/Flk-1/CD309

### Contact



[www.abclonal.com](http://www.abclonal.com)

### Product Information

#### Source

Rabbit

#### Isotype

IgG

#### Purification

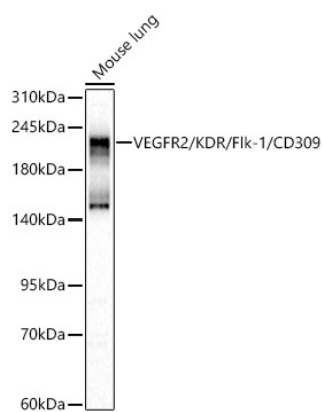
Affinity purification

#### Storage

Store at -20°C. Avoid freeze / thaw cycles.

Buffer: PBS with 0.05% proclin300, 50% glycerol, pH7.3.

## Validation Data



Western blot analysis of lysates from Mouse lung, using VEGFR2/KDR/Fik-1/CD309 Rabbit pAb (A24671) at 1:1000 dilution.

Secondary antibody: HRP Goat Anti-Rabbit IgG (H+L) (AS014) at 1:10000 dilution.

Lysates/proteins: 25ug per lane.

Blocking buffer: 3% nonfat dry milk in TBST.

Detection: ECL Basic Kit (RM00020).

Exposure time: 60s.