

A23788

Leader in Biomolecular Solutions for Life Science



F4/80 Rabbit mAb

Catalog No.: A23788

Recombinant

1 Publications

Basic Information

Observed MW

65-250kDa

Calculated MW

102KDa

Category

SMab Recombinant Monoclonal Antibody

Applications

IHC-P,ELISA

Cross-Reactivity

Mouse

CloneNo number

ARC61555

Background

Predicted to enable G protein-coupled receptor activity. Predicted to be involved in adenylate cyclase-activating G protein-coupled receptor signaling pathway. Predicted to act upstream of or within G protein-coupled receptor signaling pathway and adaptive immune response. Located in external side of plasma membrane. Is expressed in several structures, including cardiovascular system; central nervous system; genitourinary system; hemolymphoid system; and intestine. Orthologous to human ADGRE1 (adhesion G protein-coupled receptor E1).

Recommended Dilutions

IHC-P 1:50 - 1:200

Immunogen Information

Gene ID

13733

Swiss Prot

Q61549

Immunogen

Recombinant fusion protein containing a sequence corresponding to amino acids 367-645 of mouse F4/80(NP_034260.1).

Synonyms

Emr1; Ly71; F4/80; Gpf480; TM7LN3; DD7A5-7; EGF-TM7

Contact



www.abclonal.com

Product Information

Source

Rabbit

Isotype

IgG

Purification

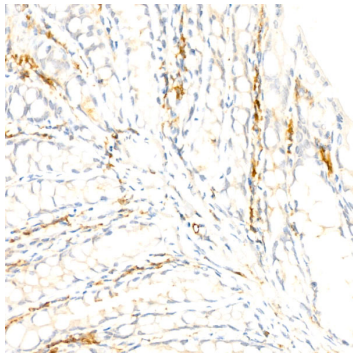
Affinity purification

Storage

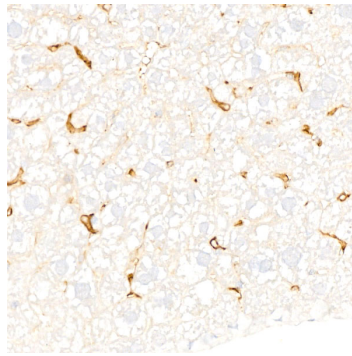
Store at -20°C. Avoid freeze / thaw cycles.

Buffer: PBS with 0.05% proclin300,0.05% BSA,50% glycerol,pH7.3.

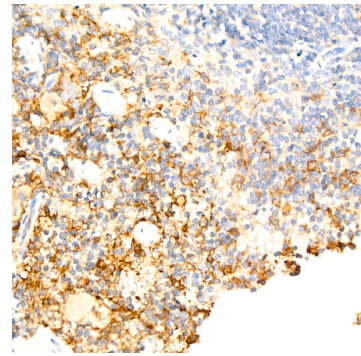
Validation Data



Immunohistochemistry analysis of F4/80 in paraffin-embedded mouse colon using F4/80 Rabbit mAb (A23788) at dilution of 1:200 (40x lens). Perform high pressure antigen retrieval with 10 mM citrate buffer pH 6.0 before commencing with IHC staining protocol.



Immunohistochemistry analysis of F4/80 in paraffin-embedded mouse liver using F4/80 Rabbit mAb (A23788) at dilution of 1:200 (40x lens). Perform high pressure antigen retrieval with 10 mM citrate buffer pH 6.0 before commencing with IHC staining protocol.



Immunohistochemistry analysis of F4/80 in paraffin-embedded mouse spleen using F4/80 Rabbit mAb (A23788) at dilution of 1:200 (40x lens). Perform high pressure antigen retrieval with 10 mM citrate buffer pH 6.0 before commencing with IHC staining protocol.