

## Asymmetric DiMethyl-Histone H4-R3 pAb

<b>Catalog No</b>	A2376	<b>Category</b>	Methylated Antibodies
<b>Applications</b>	WB,IHC,IF,IP	<b>Observed MW</b>	13kDa
<b>Cross-Reactivity</b>	Human,Mouse,Rat,Other (Wide Range)	<b>Calculated MW</b>	11kDa

### Immunogen Information

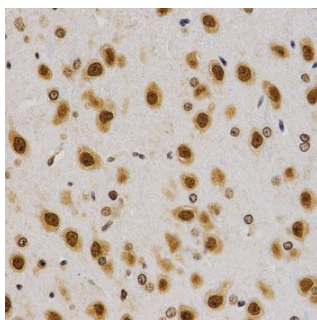
<b>Immunogen</b>	A synthetic methylated peptide corresponding to residues surrounding Arg3 of human histone H4
<b>Gene ID</b>	8370
<b>Swiss Prot</b>	P62805
<b>Synonyms</b>	FO108,H4,H4/n,H4F2,H4FN,HIST2H4

### Product information

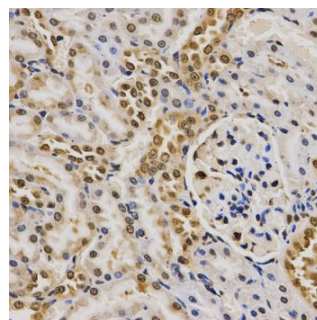
<b>Source</b>	Rabbit
<b>Isotype</b>	IgG
<b>Purity</b>	Affinity purification
<b>Storage</b>	Store at -20°C. Avoid freeze / thaw cycles. Buffer: PBS with 0.02% sodium azide, 50% glycerol, pH7.3.

### Background

Histones are basic nuclear proteins that are responsible for the nucleosome structure of the chromosomal fiber in eukaryotes. This structure consists of approximately 146 bp of DNA wrapped around a nucleosome, an octamer composed of pairs of each of the four core histones (H2A, H2B, H3, and H4). The chromatin fiber is further compacted through the interaction of a linker histone, H1, with the DNA between the nucleosomes to form higher order chromatin structures. This gene is intronless and encodes a replication-dependent histone that is a member of the histone H4 family. Transcripts from this gene lack polyA tails; instead, they contain a palindromic termination element. This gene is found in a histone cluster on chromosome 1. This gene is one of four histone genes in the cluster that are duplicated; this record represents the centromeric copy.



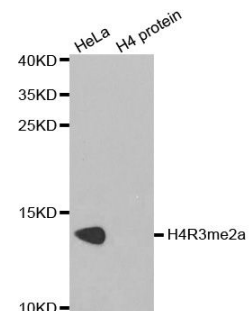
Immunohistochemistry of paraffin-embedded rat brain using Asymmetric DiMethyl-Histone H4-R3 antibody (A2376) at dilution of 1:200 (40x lens).



Immunohistochemistry of paraffin-embedded rat kidney using Asymmetric DiMethyl-Histone H4-R3 antibody (A2376) at dilution of 1:200 (40x lens).

### Recommended Dilutions

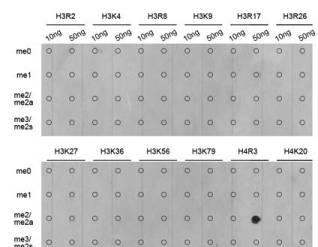
WB	1:500 - 1:2000
IHC	1:50 - 1:200
IF	1:50 - 1:200
IP	1:50 - 1:100



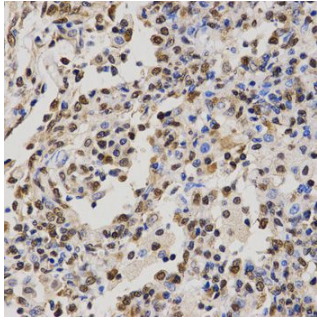
Western blot analysis of extracts of various cell lines, using Asymmetric DiMethyl-Histone H4-R3 antibody (A2376).

Secondary antibody: HRP Goat Anti-Rabbit IgG (H+L) (AS014) at 1:10000 dilution.

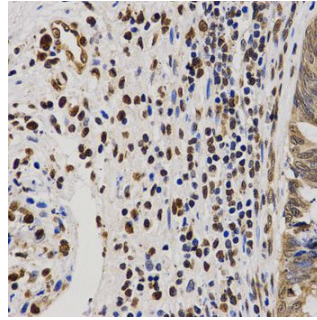
Lysates/proteins: 25ug per lane.  
Blocking buffer: 3% nonfat dry milk in TBST.



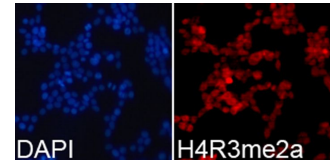
Dot-blot analysis of all sorts of methylation peptides using Asymmetric DiMethyl-Histone H4-R3 antibody (A2376).



Immunohistochemistry of paraffin-embedded human lung cancer using Asymmetric DiMethyl-Histone H4-R3 antibody (A2376) at dilution of 1:200 (40x lens).



Immunohistochemistry of paraffin-embedded human rectal cancer using Asymmetric DiMethyl-Histone H4-R3 antibody (A2376) at dilution of 1:200 (40x lens).



Immunofluorescence analysis of 293T cells using Asymmetric DiMethyl-Histone H4-R3 antibody (A2376). Blue: DAPI for nuclear staining.