

A23549

Leader in Biomolecular Solutions for Life Science



CD45 Rabbit mAb

Catalog No.: A23549

Recombinant

1 Publications

Basic Information

Observed MW

180-250kDa

Calculated MW

145kDa

Category

Mouse Monoclonal Antibody

Applications

WB,IHC-P,IF/ICC,FC,ELISA

Cross-Reactivity

Mouse

CloneNo number

ARC60962

Background

Enables several functions, including heparan sulfate proteoglycan binding activity; heparin binding activity; and protein tyrosine phosphatase activity. Involved in several processes, including lymphocyte differentiation; positive regulation of macromolecule metabolic process; and regulation of signal transduction. Acts upstream of or within several processes, including lymphocyte differentiation; positive regulation of lymphocyte activation; and regulation of protein phosphorylation. Located in external side of plasma membrane; focal adhesion; and membrane raft. Is expressed in several structures, including 3rd branchial arch; alimentary system; cardiovascular system; hemolymphoid system; and placenta. Used to study systemic lupus erythematosus. Human ortholog(s) of this gene implicated in hepatitis C; multiple sclerosis; severe combined immunodeficiency; and severe combined immunodeficiency, autosomal recessive, T cell-negative, B cell-positive, Nk cell-positive. Orthologous to human PTPRC (protein tyrosine phosphatase receptor type C).

Recommended Dilutions

WB	1:500 - 1:1000
IHC-P	1:50 - 1:200
IF	1:50 - 1:200
FC	1:100 - 1:500

Immunogen Information

Gene ID

19264

Swiss Prot

P06800

Immunogen

Recombinant fusion protein containing a sequence corresponding to amino acids 26-566 of mouse CD45 (NP_001104786.2)

Synonyms

loc; B220; Cd45; L-CA; Ly-5; T200; CD45R; Lyt-4; CD45

Contact

www.abclonal.com

Product Information

Source

Rabbit

Isotype

IgG

Purification

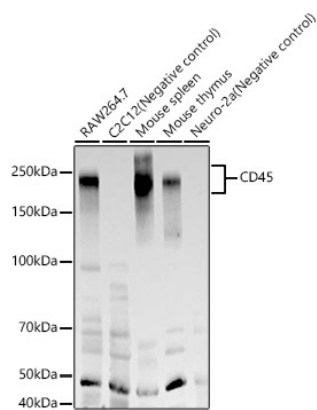
Affinity purification

Storage

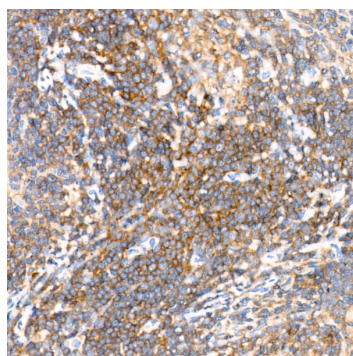
Store at -20°C. Avoid freeze / thaw cycles.

Buffer: PBS with 0.05% proclin300,0.05% BSA,50% glycerol,pH7.3.

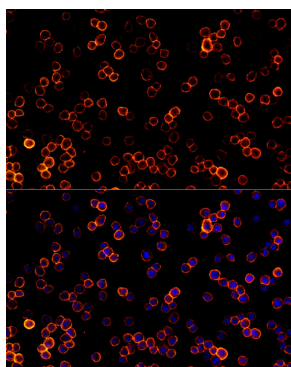
Validation Data



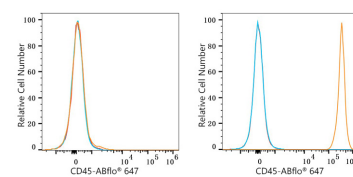
Western blot analysis of various lysates, using CD45 Rabbit mAb antibody (A23549) at 1:1000 dilution.
Secondary antibody: HRP Goat Anti-Rabbit IgG (H+L) (A5014) at 1:10000 dilution.
Lysates/proteins: 25µg per lane.
Blocking buffer: 3% nonfat dry milk in TBST.
Detection: ECL Enhanced Kit (RM00021).
Exposure time: 120s.



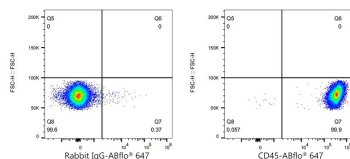
Immunohistochemistry analysis of paraffin-embedded mouse spleen using CD45 Rabbit mAb (A23549) at dilution of 1:200 (40x lens). Perform high pressure antigen retrieval with 10 mM citrate buffer pH 6.0 before commencing with IHC staining protocol.



Immunofluorescence analysis of RAW264.7 cells using CD45 Rabbit mAb (A23549) at dilution of 1:100 (40x lens). Blue: DAPI for nuclear staining.



Flow cytometry: 1×10^6 C2C12 cells (negative control, left) and C57BL/6 mouse Splenocytes (right) were surface-stained with CD45 Rabbit mAb (A23549, 2 µg/mL, orange line) or ABflo® 647 Rabbit IgG isotype control (A22070, 5 µl/Test, blue line), followed by Alexa Fluor® 647 conjugated goat anti-rabbit pAb staining. Non-fluorescently stained cells were used as blank control (red line).



Flow cytometry: 1×10^6 C57BL/6 mouse Splenocytes were surface-stained with ABflo® 647 Rabbit IgG isotype control (A22070, 5 µl/Test, left) or CD45 Rabbit mAb (A23549, 2 µg/mL, right).