

A23263

Leader in Biomolecular Solutions for Life Science



CD106 Rabbit pAb

Catalog No.: A23263

Basic Information

Observed MW

85-100kDa

Calculated MW

81kDa

Category

Polyclonal Antibody

Applications

WB, ELISA

Cross-Reactivity

Mouse

Background

Predicted to enable integrin binding activity and primary amine oxidase activity. Acts upstream of or within several processes, including cellular response to glucose stimulus; chorio-allantoic fusion; and heterophilic cell-cell adhesion via plasma membrane cell adhesion molecules. Located in apical plasma membrane. Is expressed in several structures, including brain; embryo mesenchyme; extraembryonic component; heart; and hemolymphoid system. Human ortholog(s) of this gene implicated in hypertension. Orthologous to human VCAM1 (vascular cell adhesion molecule 1).

Recommended Dilutions

WB 1:500 - 1:1000

Immunogen Information

Gene ID

22329

Swiss Prot

P29533

Immunogen

Recombinant protein of mouse CD106.

Synonyms

CD106; Vcam-1

Contact



www.abclonal.com

Product Information

Source

Rabbit

Isotype

IgG

Purification

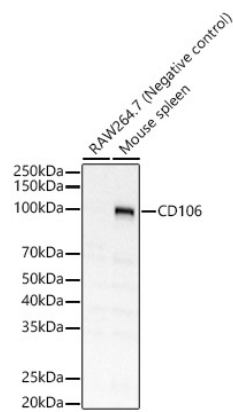
Affinity purification

Storage

Store at -20°C. Avoid freeze / thaw cycles.

Buffer: PBS with 0.01% thimerosal, 50% glycerol, pH 7.3.

Validation Data



Western blot analysis of various lysates, using CD106 Rabbit pAb (A23263) at 1:2500 dilution.
Secondary antibody: HRP Goat Anti-Rabbit IgG (H+L) (AS014) at 1:10000 dilution.
Lysates/proteins: 25µg per lane.
Blocking buffer: 3% nonfat dry milk in TBST.
Detection: ECL Basic Kit (RM00020).
Exposure time: 30s.