

A23183

Leader in Biomolecular Solutions for Life Science



ABflo® 647 Rabbit anti-Human HER2/ErbB2 mAb

Catalog No.: A23183

Basic Information

Observed MW

Refer to figures

Calculated MW

138kDa

Category

SMab Recombinant Monoclonal Antibody

Applications

FC

Cross-Reactivity

Human

CloneNo number

ARC5137-ABf647

Conjugate

ABflo® 647. Ex:648nm. Em:664nm.

Background

This gene encodes a member of the epidermal growth factor (EGF) receptor family of receptor tyrosine kinases. This protein has no ligand binding domain of its own and therefore cannot bind growth factors. However, it does bind tightly to other ligand-bound EGF receptor family members to form a heterodimer, stabilizing ligand binding and enhancing kinase-mediated activation of downstream signalling pathways, such as those involving mitogen-activated protein kinase and phosphatidylinositol-3 kinase. Allelic variations at amino acid positions 654 and 655 of isoform a (positions 624 and 625 of isoform b) have been reported, with the most common allele, Ile654/Ile655, shown here. Amplification and/or overexpression of this gene has been reported in numerous cancers, including breast and ovarian tumors. Alternative splicing results in several additional transcript variants, some encoding different isoforms and others that have not been fully characterized.

Recommended Dilutions

FC 5 µl per 10⁶ cells in
100 µl volume

Immunogen Information

Gene ID

2064

Swiss Prot

P04626

Immunogen

Recombinant fusion protein containing a sequence corresponding to amino acids 23-652 of human HER2/ErbB2 (NP_004439.2).

Synonyms

NEU; NGL; HER2; TKR1; CD340; HER-2; VSCN2; MLN 19; MLN-19; c-ERB2; c-ERB-2; HER-2/neu; p185(erbB2)

Contact



www.abclonal.com

Product Information

Source

Rabbit

Isotype

IgG

Purification

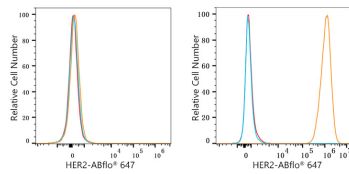
Affinity purification

Storage

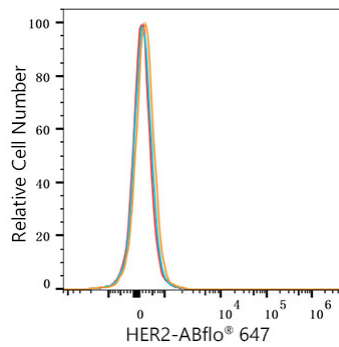
Store at 2-8°C. Avoid freeze.

Buffer: PBS with 0.03% proclin300, 0.2% BSA, pH7.3.

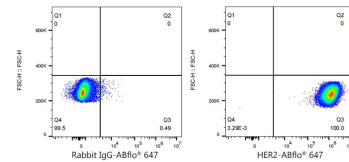
Validation Data



Flow cytometry: 1×10^6 HL-60 cells (negative control, Left) and SK-BR-3 cells (right) were surface-stained with ABflo® 647 Rabbit anti-Human HER2/ErbB2 mAb (A23183, 5 μ l/Test, orange line) or ABflo® 647 Rabbit IgG isotype control (A22070, 5 μ l/Test, blue line). Non-fluorescently stained cells were used as blank control (red line).



Flow cytometry: 1×10^6 HL-60 cells (negative control) were surface-stained with ABflo® 647 Rabbit anti-Human HER2/ErbB2 mAb (A23183, 5 μ l/Test, orange line) or ABflo® 647 Rabbit IgG isotype control (A22070, 5 μ l/Test, blue line). Non-fluorescently stained HL-60 cells was used as blank control (red line).



Flow cytometry: 1×10^6 SK-BR-3 cells were surface-stained with ABflo® 647 Rabbit IgG isotype control (A22070, 5 μ l/Test, left) or ABflo® 647 Rabbit anti-Human HER2/ErbB2 mAb (A23183, 5 μ l/Test, right).