

A22485

Leader in Biomolecular Solutions for Life Science



## ABflo® 488 Rabbit anti-Human CD326/EPCAM mAb

Catalog No.: A22485

### Basic Information

#### Observed MW

**Calculated MW**  
35kDa

#### Category

SMab Recombinant Monoclonal Antibody

#### Applications

FC

#### Cross-Reactivity

Human

#### CloneNo number

ARC57676-ABf488

#### Conjugate

ABflo® 488. Ex:491nm. Em:516nm.

### Background

This gene encodes a carcinoma-associated antigen and is a member of a family that includes at least two type I membrane proteins. This antigen is expressed on most normal epithelial cells and gastrointestinal carcinomas and functions as a homotypic calcium-independent cell adhesion molecule. The antigen is being used as a target for immunotherapy treatment of human carcinomas. Mutations in this gene result in congenital tufting enteropathy.

### Recommended Dilutions

**FC** 5 µl per 10<sup>6</sup> cells in  
100 µl volume

### Immunogen Information

**Gene ID**  
4072

**Swiss Prot**  
P16422

#### Immunogen

Recombinant fusion protein containing a sequence corresponding to amino acids 24-265 of human CD326/EPCAM (NP\_002345.2).

#### Synonyms

ESA; KSA; M4S1; MK-1; DIAR5; EGP-2; EGP40; KS1/4; MIC18; TROP1; BerEp4; EGP314; HNPCC8; LYNCH8; MOC-31; Ber-Ep4; TACSTD1

### Contact



[www.abclonal.com](http://www.abclonal.com)

### Product Information

**Source**  
Rabbit

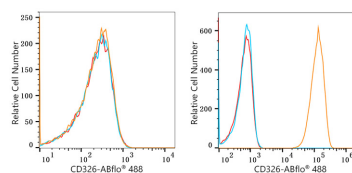
**Isotype**  
IgG

**Purification**  
Affinity purification

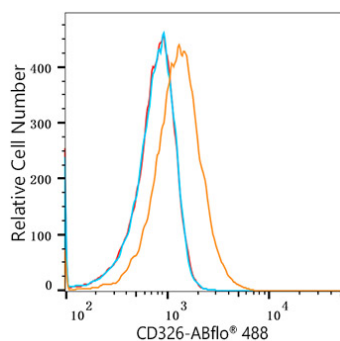
#### Storage

Store at 2-8°C. Avoid freeze.  
Buffer: PBS with 0.03% proclin300, 0.2% BSA, pH7.3.

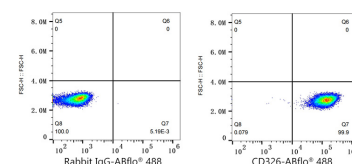
## Validation Data



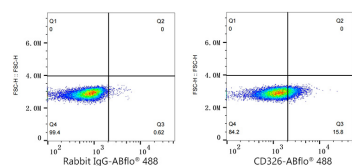
Flow cytometry:  $1 \times 10^6$  Jurkat cells (negative control, left) and HT-29 cells (right) were surface-stained with ABflo® 488 Rabbit anti-Human CD326/EPCAM mAb (A22485, 2  $\mu\text{g/mL}$ , orange line) or ABflo® 488 Rabbit IgG isotype control (A22069, 2  $\mu\text{g/mL}$ , blue line). Non-fluorescently stained cells were used as blank control (red line).



Flow cytometry:  $1 \times 10^6$  HeLa cells (Low Expression) were surface-stained with ABflo® 488 Rabbit anti-Human CD326/EPCAM mAb (A22485, 5  $\mu\text{l/Test}$ , orange line) or ABflo® 488 Rabbit IgG isotype control (A22069, 5  $\mu\text{l/Test}$ , blue line). Non-fluorescently stained HeLa cells were used as blank control (red line).



Flow cytometry:  $1 \times 10^6$  HT-29 cells were surface-stained with ABflo® 488 Rabbit IgG isotype control (A22069, 5  $\mu\text{l/Test}$ , left) or ABflo® 488 Rabbit anti-Human CD326/EPCAM mAb (A22485, 5  $\mu\text{l/Test}$ , right).



Flow cytometry:  $1 \times 10^6$  HeLa cells (Low Expression) were surface-stained with ABflo® 488 Rabbit IgG isotype control (A22069, 5  $\mu\text{l/Test}$ , left) or ABflo® 488 Rabbit anti-Human CD326/EPCAM mAb (A22485, 5  $\mu\text{l/Test}$ , right).