

A22065

Leader in Biomolecular Solutions for Life Science



# ABflo® 488 Rabbit anti-Human Cytokeratin 19 (KRT19) mAb

Catalog No.: A22065

## Basic Information

### Observed MW

**Calculated MW**  
44kDa

### Category

SMab Recombinant Monoclonal Antibody

### Applications

FC (intra)

### Cross-Reactivity

Human

### CloneNo number

ARC54260-ABf488

### Conjugate

ABflo® 488. Ex:491nm. Em:516nm.

## Background

The protein encoded by this gene is a member of the keratin family. The keratins are intermediate filament proteins responsible for the structural integrity of epithelial cells and are subdivided into cytokeratins and hair keratins. The type I cytokeratins consist of acidic proteins which are arranged in pairs of heterotypic keratin chains. Unlike its related family members, this smallest known acidic cytokeratin is not paired with a basic cytokeratin in epithelial cells. It is specifically expressed in the periderm, the transiently superficial layer that envelopes the developing epidermis. The type I cytokeratins are clustered in a region of chromosome 17q12-q21.

## Recommended Dilutions

**FC (intra)**      5 µl per 10<sup>6</sup> cells in  
100 µl volume

## Immunogen Information

**Gene ID**  
3880

**Swiss Prot**  
P08727

### Immunogen

A synthetic peptide corresponding to a sequence within amino acids 301-400 of human Cytokeratin 19 (KRT19) (NP\_002267.2).

### Synonyms

K19; CK19; K1CS

## Contact



[www.abclonal.com](http://www.abclonal.com)

## Product Information

**Source**  
Rabbit

**Isotype**  
IgG

**Purification**  
Affinity purification

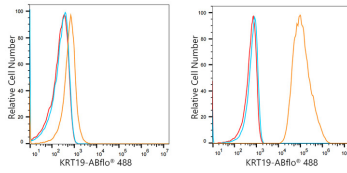
### Storage

Store at 2-8°C. Avoid freeze.

Buffer: PBS with 0.03% proclin300,0.2% BSA,pH7.3.

## Validation Data

---



Flow cytometry:  $1 \times 10^6$  Jurkat cells (negative control, left) and MCF7 cells (right) were intracellularly-stained with ABflo® 488 Rabbit anti-Human Cytokeratin 19 (KRT19) mAb(A22065, 5 µl/Test, orange line) or ABflo® 488 Rabbit IgG isotype control (A22069, 5 µl/Test, blue line). Non-fluorescently stained cells were used as blank control (red line).