

A2163

Leader in Biomolecular Solutions for Life Science



## Connexin 43 Rabbit pAb

Catalog No.: A2163

2 Publications

### Basic Information

#### Observed MW

43kDa

#### Calculated MW

43kDa

#### Category

Polyclonal Antibody

#### Applications

WB, ELISA

#### Cross-Reactivity

Human, Mouse, Rat

### Background

This gene is a member of the connexin gene family. The encoded protein is a component of gap junctions, which are composed of arrays of intercellular channels that provide a route for the diffusion of low molecular weight materials from cell to cell. The encoded protein is the major protein of gap junctions in the heart that are thought to have a crucial role in the synchronized contraction of the heart and in embryonic development. A related intronless pseudogene has been mapped to chromosome 5. Mutations in this gene have been associated with oculodentodigital dysplasia, autosomal recessive craniometaphyseal dysplasia and heart malformations.

### Recommended Dilutions

WB 1:500 - 1:1000

### Immunogen Information

#### Gene ID

2697

#### Swiss Prot

P17302

#### Immunogen

A synthetic peptide corresponding to a sequence within amino acids 283-382 of human Connexin 43 (NP\_000156.1).

#### Synonyms

HSS; CMDR; CX43; EKVP; GJAL; ODDD; AVSD3; EKVP3; HLHS1; PPKCA; Connexin 43

### Contact



[www.abclonal.com](http://www.abclonal.com)

### Product Information

#### Source

Rabbit

#### Isotype

IgG

#### Purification

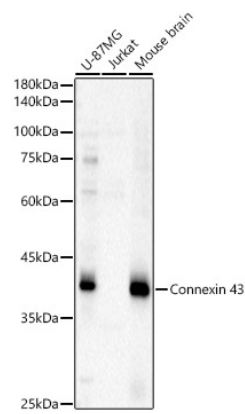
Affinity purification

#### Storage

Store at -20°C. Avoid freeze / thaw cycles.

Buffer: PBS with 0.05% proclin300, 50% glycerol, pH7.3.

Validation Data



Western blot analysis of lysates from Rat brain, using Connexin 43 Rabbit pAb (A2163) at 1:800 dilution. Secondary antibody: HRP Goat Anti-Rabbit IgG (H+L) (AS014) at 1:10000 dilution. Lysates/proteins: 25µg per lane. Blocking buffer: 3% nonfat dry milk in TBST. Detection: ECL Basic Kit (RM00020). Exposure time: 10s.

