

A2162

Leader in Biomolecular Solutions for Life Science



## [KD Validated] eIF4E Rabbit pAb

Catalog No.: A2162

6 Publications

### Basic Information

#### Observed MW

25kDa/28kDa

#### Calculated MW

25kDa

#### Category

Polyclonal Antibody

#### Applications

WB, IHC-P, IF/ICC, IP, ELISA

#### Cross-Reactivity

Human, Mouse, Rat

### Background

The protein encoded by this gene is a component of the eukaryotic translation initiation factor 4F complex, which recognizes the 7-methylguanosine cap structure at the 5' end of messenger RNAs. The encoded protein aids in translation initiation by recruiting ribosomes to the 5'-cap structure. Association of this protein with the 4F complex is the rate-limiting step in translation initiation. This gene acts as a proto-oncogene, and its expression and activation is associated with transformation and tumorigenesis. Several pseudogenes of this gene are found on other chromosomes. Alternative splicing results in multiple transcript variants.

### Recommended Dilutions

WB	1:500 - 1:1000
IHC-P	1:50 - 1:100
IF/ICC	1:50 - 1:200
IP	0.5µg-4µg antibody for 200µg-400µg extracts of whole cells

### Immunogen Information

#### Gene ID

1977

#### Swiss Prot

P06730

#### Immunogen

A synthetic peptide corresponding to a sequence within amino acids 1-100 of human eIF4E (NP\_001959.1).

#### Synonyms

CBP; EIF4F; AUTS19; EIF4E1; eIF-4E; EIF4EL1; 4E

### Contact



[www.abclonal.com](http://www.abclonal.com)

### Product Information

#### Source

Rabbit

#### Isotype

IgG

#### Purification

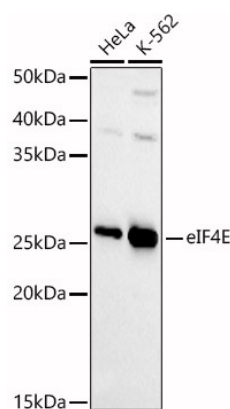
Affinity purification

#### Storage

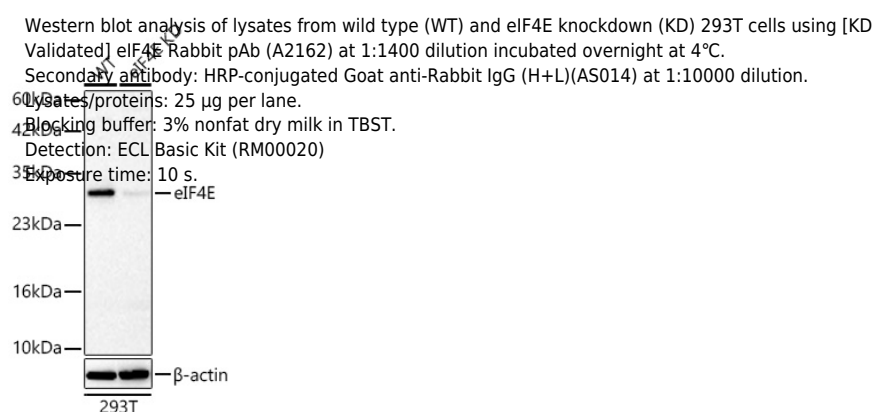
Store at -20°C. Avoid freeze / thaw cycles.

Buffer: PBS with 0.02% sodium azide, 50% glycerol, pH 7.3.

## Validation Data



Western blot analysis of various lysates, using [KD Validated] eIF4E Rabbit pAb (A2162) at 1:1000 dilution. Secondary antibody: HRP Goat Anti-Rabbit IgG (H+L) (AS014) at 1:10000 dilution. Lysates/proteins: 25µg per lane. Blocking buffer: 3% nonfat dry milk in TBST. Detection: ECL Basic Kit (RM00020). Exposure time: 45s.



Western blot analysis of lysates from wild type (WT) and eIF4E knockdown (KD) 293T cells using [KD Validated] eIF4E Rabbit pAb (A2162) at 1:1400 dilution incubated overnight at 4°C.

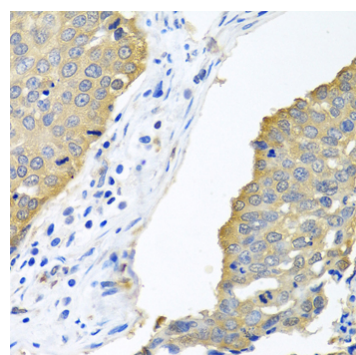
Secondary antibody: HRP-conjugated Goat anti-Rabbit IgG (H+L)(AS014) at 1:10000 dilution.

Lysates/proteins: 25 µg per lane.

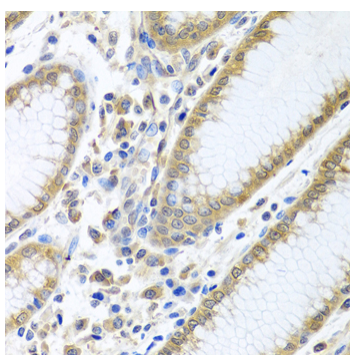
Blocking buffer: 3% nonfat dry milk in TBST.

Detection: ECL Basic Kit (RM00020)

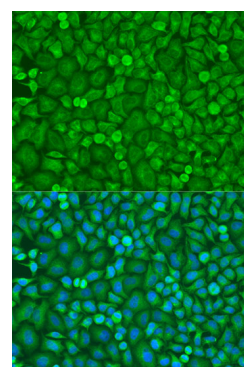
Exposure time: 10 s.



Immunohistochemistry analysis of eIF4E in paraffin-embedded human lung cancer using [KD Validated] eIF4E Rabbit pAb (A2162) at dilution of 1:100 (40x lens). Perform microwave antigen retrieval with 10 mM PBS buffer pH 7.2 before commencing with IHC staining protocol.

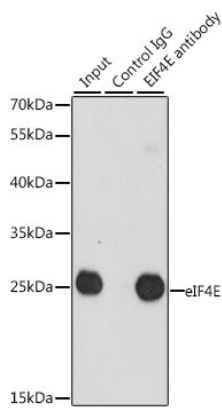


Immunohistochemistry analysis of eIF4E in paraffin-embedded human stomach using [KD Validated] eIF4E Rabbit pAb (A2162) at dilution of 1:100 (40x lens). Perform microwave antigen retrieval with 10 mM PBS buffer pH 7.2 before commencing with IHC staining protocol.



Immunofluorescence analysis of U2OS cells using [KD Validated] eIF4E Rabbit pAb (A2162) at dilution of 1:100. Secondary antibody: Cy3 Goat Anti-Rabbit IgG (H+L) (AS007) at 1:500 dilution. Blue: DAPI for nuclear staining.

# Validation Data



Immunoprecipitation analysis of 200 µg extracts of 293T cells, using 3 µg [KD Validated] eIF4E Rabbit pAb (A2162). Western blot was performed from the immunoprecipitate using [KD Validated] eIF4E Rabbit pAb at a dilution of 1:1000.