

A2136

Leader in Biomolecular Solutions for Life Science



Cullin 1 Rabbit pAb

Catalog No.: A2136

3 Publications

Basic Information

Observed MW

80kDa

Calculated MW

90kDa

Category

Polyclonal Antibody

Applications

WB, IHC-P, IF/ICC, ELISA

Cross-Reactivity

Human, Mouse, Rat

Background

Predicted to enable ubiquitin protein ligase binding activity and ubiquitin-protein transferase activity. Involved in SCF-dependent proteasomal ubiquitin-dependent protein catabolic process and protein ubiquitination. Located in plasma membrane. Part of Parkin-FBXW7-Cul1 ubiquitin ligase complex and SCF ubiquitin ligase complex.

Recommended Dilutions

WB	1:500 - 1:1000
IHC-P	1:50 - 1:200
IF/ICC	1:10 - 1:100

Immunogen Information

Gene ID

8454

Swiss Prot

Q13616

Immunogen

Recombinant fusion protein containing a sequence corresponding to amino acids 435-593 of human Cullin 1 (NP_003583.2).

Synonyms

Cullin 1; CUL1; cullin-1; MGC149834; MGC149835

Contact



www.abclonal.com

Product Information

Source

Rabbit

Isotype

IgG

Purification

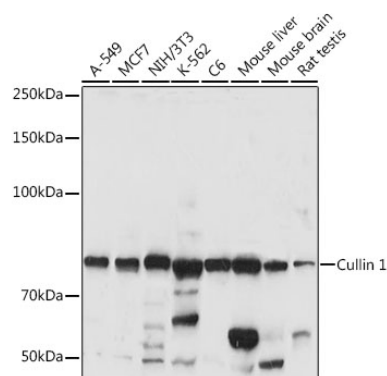
Affinity purification

Storage

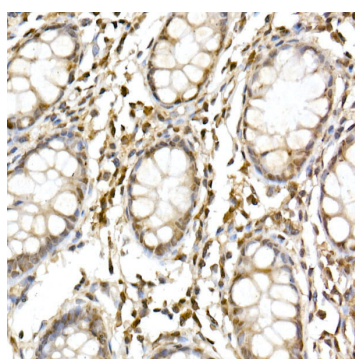
Store at -20°C. Avoid freeze / thaw cycles.

Buffer: PBS with 0.05% proclin300, 50% glycerol, pH7.3.

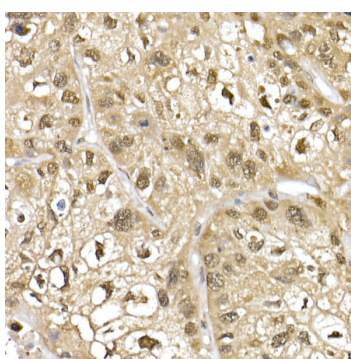
Validation Data



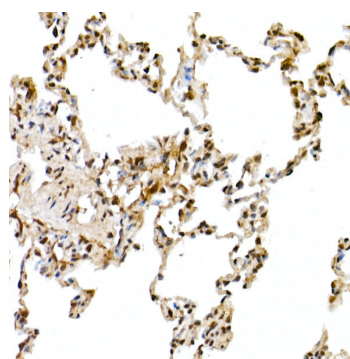
Western blot analysis of various lysates using Cullin 1 Rabbit pAb (A2136) at 1:1000 dilution.
 Secondary antibody: HRP Goat Anti-Rabbit IgG (H+L) (A5014) at 1:10000 dilution.
 Lysates/proteins: 25µg per lane.
 Blocking buffer: 3% nonfat dry milk in TBST.
 Detection: ECL Basic Kit (RM00020).
 Exposure time: 10s.



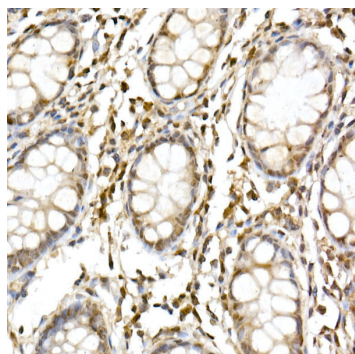
Immunohistochemistry analysis of Cullin 1 in paraffin-embedded human colon using Cullin 1 Rabbit pAb (A2136) at dilution of 1:50 (40x lens). Perform high pressure antigen retrieval with 10 mM citrate buffer pH 6.0 before commencing with IHC staining protocol.



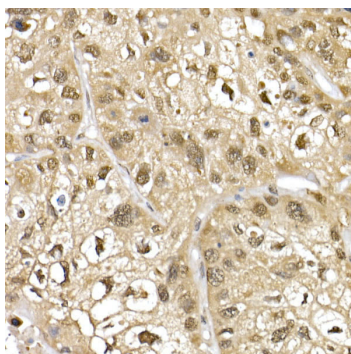
Immunohistochemistry analysis of Cullin 1 in paraffin-embedded human lung cancer using Cullin 1 Rabbit pAb (A2136) at dilution of 1:50 (40x lens). Perform high pressure antigen retrieval with 10 mM citrate buffer pH 6.0 before commencing with IHC staining protocol.



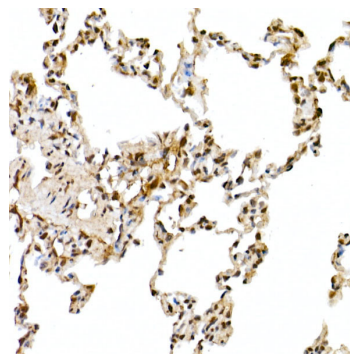
Immunohistochemistry analysis of Cullin 1 in paraffin-embedded rat lung using Cullin 1 Rabbit pAb (A2136) at dilution of 1:50 (40x lens). Perform high pressure antigen retrieval with 10 mM citrate buffer pH 6.0 before commencing with IHC staining protocol.



Immunohistochemistry analysis of Cullin 1 in paraffin-embedded human colon using Cullin 1 Rabbit pAb (A2136) at dilution of 1:50 (40x lens). Perform high pressure antigen retrieval with 10 mM citrate buffer pH 6.0 before commencing with IHC staining protocol.

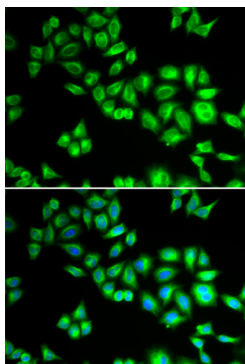


Immunohistochemistry analysis of Cullin 1 in paraffin-embedded human lung cancer using Cullin 1 Rabbit pAb (A2136) at dilution of 1:50 (40x lens). Perform high pressure antigen retrieval with 10 mM citrate buffer pH 6.0 before commencing with IHC staining protocol.



Immunohistochemistry analysis of Cullin 1 in paraffin-embedded rat lung using Cullin 1 Rabbit pAb (A2136) at dilution of 1:50 (40x lens). Perform high pressure antigen retrieval with 10 mM citrate buffer pH 6.0 before commencing with IHC staining protocol.

Validation Data



Immunofluorescence analysis of HeLa cells using Cullin 1 Rabbit pAb (A2136). Secondary antibody: Cy3 Goat Anti-Rabbit IgG (H+L) (AS007) at 1:500 dilution. Blue: DAPI for nuclear staining.