

A2131

Leader in Biomolecular Solutions for Life Science



PGP9.5/UCHL1 Rabbit pAb

Catalog No.: A2131

2 Publications

Basic Information

Observed MW

27kDa

Calculated MW

25kDa

Category

Mouse Monoclonal Antibody

Applications

WB,IF/ICC,ELISA

Cross-Reactivity

Human,Mouse,Rat

Background

The protein encoded by this gene belongs to the peptidase C12 family. This enzyme is a thiol protease that hydrolyzes a peptide bond at the C-terminal glycine of ubiquitin. This gene is specifically expressed in the neurons and in cells of the diffuse neuroendocrine system. Mutations in this gene may be associated with Parkinson disease.

Recommended Dilutions

WB	1:500 - 1:1000
IF/ICC	1:50 - 1:200

Immunogen Information

Gene ID

7345

Swiss Prot

P09936

Immunogen

Recombinant fusion protein containing a sequence corresponding to amino acids 1-220 of human PGP95/UCHL1 (NP_004172.2).

Synonyms

NDGOA; PARK5; PGP95; SPG79; PGP9.5; SPG79A; UCHL-1; Uch-L1; HEL-117; PGP 9.5; HEL-S-53; PGP9.5/UCHL1

Contact



www.abclonal.com

Product Information

Source

Rabbit

Isotype

IgG

Purification

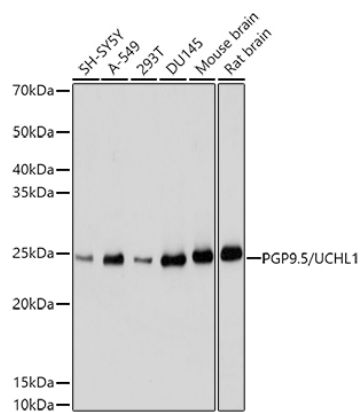
Affinity purification

Storage

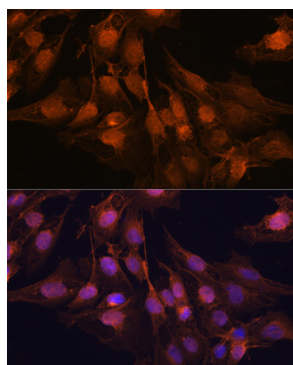
Store at -20°C. Avoid freeze / thaw cycles.

Buffer: PBS with 0.01% thimerosal,50% glycerol,pH7.3.

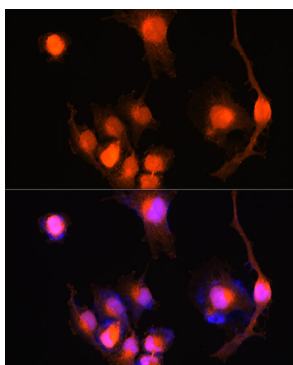
Validation Data



Western blot analysis of various lysates using PGP9.5/UCHL1 Rabbit pAb (A2131) at 1:1000 dilution.
 Secondary antibody: HRP Goat Anti-Rabbit IgG (H+L) (AS014) at 1:10000 dilution.
 Lysates/proteins: 25µg per lane.
 Blocking buffer: 3% nonfat dry milk in TBST.
 Detection: ECL Basic Kit (RM00020).
 Exposure time: 1s.



Immunofluorescence analysis of C6 cells using PGP9.5/PGP9.5/UCHL1 Rabbit pAb (A2131) at dilution of 1:100 (40x lens).
 Secondary antibody: Cy3 Goat Anti-Rabbit IgG (H+L) (AS007) at 1:500 dilution. Blue: DAPI for nuclear staining.



Immunofluorescence analysis of U-251 MG cells using PGP9.5/PGP9.5/UCHL1 Rabbit pAb (A2131) at dilution of 1:100 (40x lens).
 Secondary antibody: Cy3 Goat Anti-Rabbit IgG (H+L) (AS007) at 1:500 dilution. Blue: DAPI for nuclear staining.