

A20386

Leader in Biomolecular Solutions for Life Science



DLGAP3 Rabbit pAb

Catalog No.: A20386

Basic Information

Observed MW

110kDa

Calculated MW

106kDa

Category

Polyclonal Antibody

Applications

WB, ELISA

Cross-Reactivity

Human, Mouse

Background

Predicted to enable PDZ domain binding activity; molecular adaptor activity; and scaffold protein binding activity. Predicted to be involved in protein-containing complex assembly and regulation of postsynaptic neurotransmitter receptor activity. Predicted to be located in synapse. Predicted to be part of postsynaptic density. Predicted to be active in several cellular components, including cholinergic synapse; glutamatergic synapse; and neuromuscular junction.

Recommended Dilutions

WB 1:500 - 1:1000

Immunogen Information

Gene ID

58512

Swiss Prot

O95886

Immunogen

A synthetic peptide corresponding to a sequence within amino acids 1-100 of human DLGAP3 (NP_001073887.1).

Synonyms

DAP3; SAPAP3; SPAPA3; DLGAP3

Contact



www.abclonal.com

Product Information

Source

Rabbit

Isotype

IgG

Purification

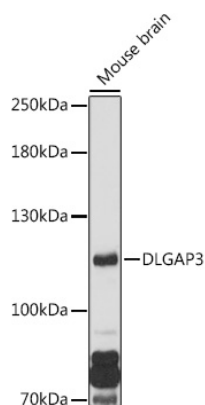
Affinity purification

Storage

Store at -20°C. Avoid freeze / thaw cycles.

Buffer: PBS with 0.01% thimerosal, 50% glycerol, pH 7.3.

Validation Data



Western blot analysis of lysates from Mouse brain, using DLGAP3 Rabbit pAb (A20386) at 1:1000 dilution.
Secondary antibody: HRP Goat Anti-Rabbit IgG (H+L) (AS014) at 1:10000 dilution.
Lysates/proteins: 25µg per lane.
Blocking buffer: 3% nonfat dry milk in TBST.
Detection: ECL Enhanced Kit (RM00021).
Exposure time: 30s.