

A20324

Leader in Biomolecular Solutions for Life Science



## SARS-CoV-2 ORF6 Rabbit pAb

Catalog No.: A20324

### Basic Information

**Observed MW**

12kDa

**Calculated MW**

7kDa

**Category**

Polyclonal Antibody

**Applications**

WB, ELISA

**Cross-Reactivity**

SARS-CoV-2

### Background

Severe acute respiratory syndrome coronavirus 2 (SARS-CoV-2) is an enveloped, positive-sense, single-stranded RNA virus that causes coronavirus disease 2019 (COVID-19). Virus particles include the RNA genetic material and structural proteins needed for invasion of host cells. Once inside the cell the infecting RNA is used to encode structural proteins that make up virus particles, nonstructural proteins that direct virus assembly, transcription, replication and host control and accessory proteins whose function has not been determined.~ ORF6 encodes a viral accessory protein. Based on its similarity to other coronavirus proteins, ORF6 protein is thought to play a role in viral pathogenesis.

### Recommended Dilutions

WB 1:500 - 1:1000

### Immunogen Information

**Gene ID**

43740572

**Swiss Prot**

P0DTC6

**Immunogen**

Recombinant fusion protein containing a sequence corresponding to amino acids 1-61 of coronavirus ORF6 (YP\_009724394.1).

**Synonyms**

### Contact



[www.abclonal.com](http://www.abclonal.com)

### Product Information

**Source**

Rabbit

**Isotype**

IgG

**Purification**

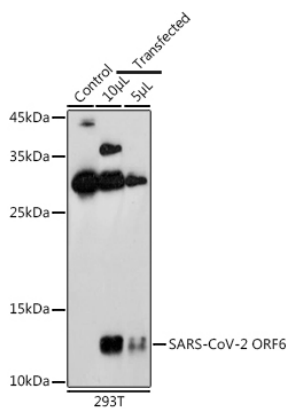
Affinity purification

**Storage**

Store at -20°C. Avoid freeze / thaw cycles.

Buffer: PBS with 0.05% proclin300, 50% glycerol, pH7.3.

# Validation Data



Western blot analysis of extracts of 293T cells, using SARS-CoV-2 ORF6 antibody (A20324) at 1:1000 dilution.  
Secondary antibody: HRP Goat Anti-Rabbit IgG (H+L) (AS014) at 1:10000 dilution.  
Lysates/proteins: 25µg per lane.  
Blocking buffer: 3% nonfat dry milk in TBST.  
Detection: ECL Basic Kit (RM00020).  
Exposure time: 180s.