

# [KO Validated] HuR/ELAVL1 Rabbit mAb

Catalog No.: A19622 **KO** **Validated** **Recombinant** **4 Publications**

## Basic Information

### Observed MW

36kDa

### Calculated MW

36kDa

### Category

Primary antibody

### Applications

ELISA, WB, IHC-P, IF/ICC, IP

### Cross-Reactivity

Human, Mouse, Rat

### CloneNo number

ARC0101

## Background

The protein encoded by this gene is a member of the ELAVL family of RNA-binding proteins that contain several RNA recognition motifs, and selectively bind AU-rich elements (AREs) found in the 3' untranslated regions of mRNAs. AREs signal degradation of mRNAs as a means to regulate gene expression, thus by binding AREs, the ELAVL family of proteins play a role in stabilizing ARE-containing mRNAs. This gene has been implicated in a variety of biological processes and has been linked to a number of diseases, including cancer. It is highly expressed in many cancers, and could be potentially useful in cancer diagnosis, prognosis, and therapy.

## Recommended Dilutions

<b>WB</b>	1:500 - 1:1000
<b>IHC-P</b>	1:50 - 1:200
<b>IF/ICC</b>	1:50 - 1:200
<b>IP</b>	0.5µg-4µg antibody for 200µg-400µg extracts of whole cells

## Immunogen Information

<b>Gene ID</b>	<b>Swiss Prot</b>
1994	Q15717

### Immunogen

A synthetic peptide corresponding to a sequence within amino acids 1-100 of human HuR/ELAVL1 (Q15717).

### Synonyms

HUR; Hua; MelG; ELAV1; L1

## Contact

 | [www.abclonal.com](http://www.abclonal.com)

## Product Information

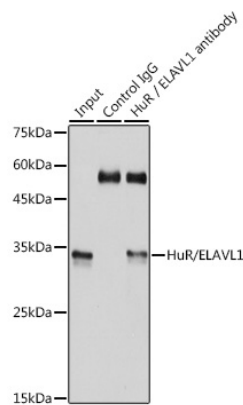
<b>Source</b>	<b>Isotype</b>	<b>Purification</b>
Rabbit	IgG	Affinity purification

### Storage

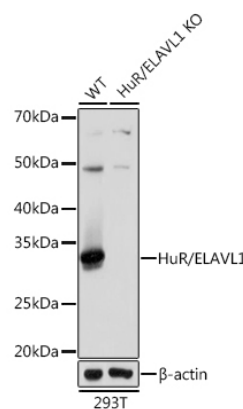
Store at -20°C. Avoid freeze / thaw cycles.

Buffer: PBS with 0.02% sodium azide, 0.05% BSA, 50% glycerol, pH7.3.

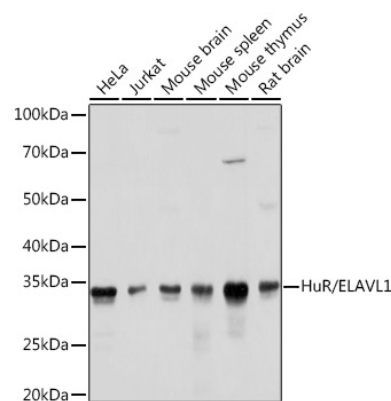
Validation Data



Immunoprecipitation analysis of 300 µg extracts of 293T cells using 3 µg HuR/ELAVL1 antibody (A19622). Western blot was performed from the immunoprecipitate using HuR/ELAVL1 antibody (A19622) at a dilution of 1:1000.

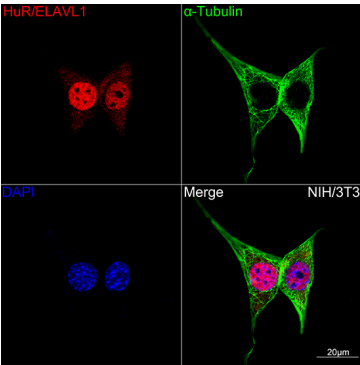


Western blot analysis of lysates from wild type (WT) and HuR/ELAVL1 knockout (KO) 293T cells, using [KO Validated] HuR/ELAVL1 Rabbit mAb (A19622) at 1:1000 dilution.  
Secondary antibody: HRP Goat Anti-Rabbit IgG (H+L) (AS014) at 1:10000 dilution.  
Lysates/proteins: 25µg per lane.  
Blocking buffer: 3% nonfat dry milk in TBST.  
Detection: ECL Basic Kit (RM00020).  
Exposure time: 1s.

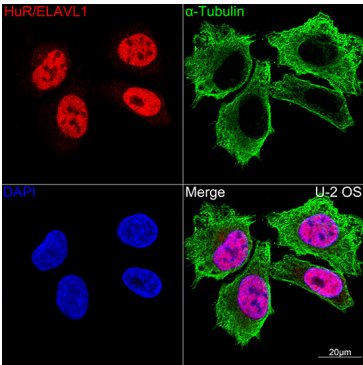


Western blot analysis of various lysates using [KO Validated] HuR/ELAVL1 Rabbit mAb (A19622) at 1:1000 dilution.  
Secondary antibody: HRP Goat Anti-Rabbit IgG (H+L) (AS014) at 1:10000 dilution.  
Lysates/proteins: 25µg per lane.  
Blocking buffer: 3% nonfat dry milk in TBST.  
Detection: ECL Basic Kit (RM00020).  
Exposure time: 1s.

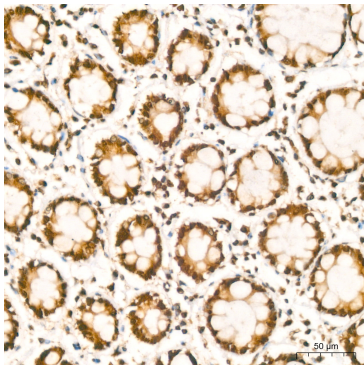
Validation Data



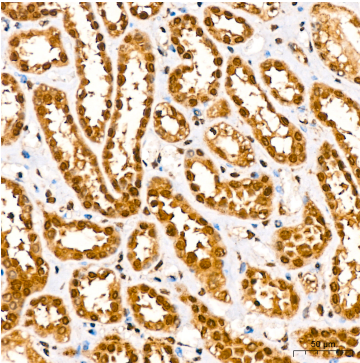
Confocal imaging of NIH/3T3 cells using [KO Validated] HuR/ELAVL1 Rabbit mAb (A19622,dilution 1:100)(Red). The cells were counterstained with α-Tubulin Mouse mAb (AC012,dilution 1:400) (Green). DAPI was used for nuclear staining (blue). Objective: 100x.



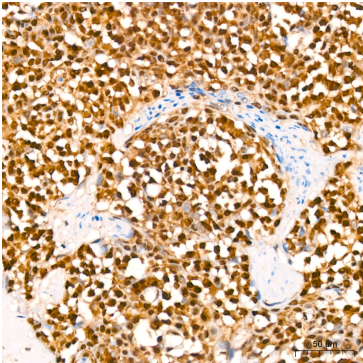
Confocal imaging of U-2 OS cells using [KO Validated] HuR/ELAVL1 Rabbit mAb (A19622,dilution 1:100)(Red). The cells were counterstained with α-Tubulin Mouse mAb (AC012,dilution 1:400) (Green). DAPI was used for nuclear staining (blue). Objective: 100x.



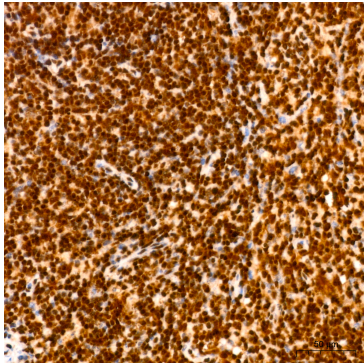
Immunohistochemistry analysis of HuR/ELAVL1 in paraffin-embedded human colon carcinoma using [KO Validated] HuR/ELAVL1 Rabbit mAb (A19622) at dilution of 1:200 (40x lens).Perform high pressure antigen retrieval with 10 mM citrate buffer pH 6.0 before commencing with IHC staining protocol.



Immunohistochemistry analysis of HuR/ELAVL1 in paraffin-embedded human kidney using [KO Validated] HuR/ELAVL1 Rabbit mAb (A19622) at dilution of 1:200 (40x lens).Perform high pressure antigen retrieval with 10 mM citrate buffer pH 6.0 before commencing with IHC staining protocol.



Immunohistochemistry analysis of HuR/ELAVL1 in paraffin-embedded human tonsil using [KO Validated] HuR/ELAVL1 Rabbit mAb (A19622) at dilution of 1:200 (40x lens).Perform high pressure antigen retrieval with 10 mM citrate buffer pH 6.0 before commencing with IHC staining protocol.



Immunohistochemistry analysis of HuR/ELAVL1 in paraffin-embedded mouse spleen using [KO Validated] HuR/ELAVL1 Rabbit mAb (A19622) at dilution of 1:200 (40x lens).Perform high pressure antigen retrieval with 10 mM citrate buffer pH 6.0 before commencing with IHC staining protocol.