

A19403

Leader in Biomolecular Solutions for Life Science



## [KD Validated] TOM20 Rabbit mAb

Catalog No.: A19403

Recombinant

32 Publications

### Basic Information

#### Observed MW

16kDa/

#### Calculated MW

16kDa

#### Category

SMab Recombinant Monoclonal Antibody

#### Applications

WB, IHC-P, IF/ICC, IP, ELISA

#### Cross-Reactivity

Human, Mouse, Rat

#### CloneNo number

ARC5002-01

### Background

Enables protein-transporting ATPase activity and unfolded protein binding activity. Involved in protein targeting to mitochondrion. Located in mitochondria-associated endoplasmic reticulum membrane and mitochondrial outer membrane.

### Recommended Dilutions

WB 1:2000 - 1:6000

IHC-P 1:50 - 1:200

IF/ICC 1:100 - 1:500

IP 0.5µg-4µg antibody for  
200µg-400µg extracts of  
whole cells

### Immunogen Information

#### Gene ID

9804

#### Swiss Prot

Q15388

#### Immunogen

Recombinant fusion protein containing a sequence corresponding to amino acids 20-145 of human TOM20 (NP\_055580.1).

#### Synonyms

MAS20; MOM19; TOM20

### Contact



[www.abclonal.com](http://www.abclonal.com)

### Product Information

#### Source

Rabbit

#### Isotype

IgG

#### Purification

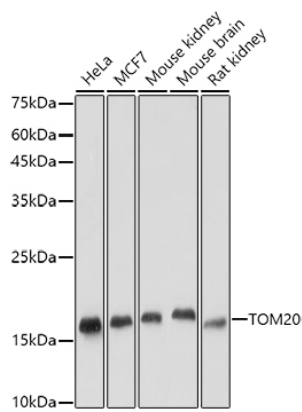
Affinity purification

#### Storage

Store at -20°C. Avoid freeze / thaw cycles.

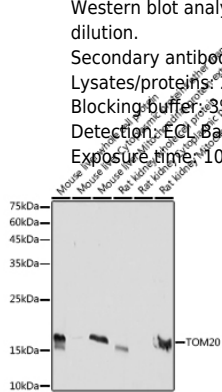
Buffer: PBS with 0.05% proclin300, 0.05% BSA, 50% glycerol, pH7.3.

Validation Data

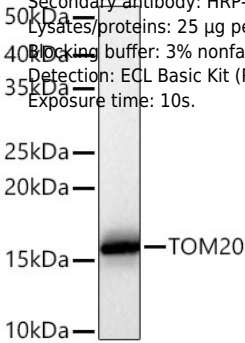


Western blot analysis of various lysates, using [KD Validated] TOM20 Rabbit mAb (A19403) at 1:5000 dilution.  
Secondary antibody: HRP Goat Anti-Rabbit IgG (H+L) (AS014) at 1:10000 dilution.  
Lysates/proteins: 25µg per lane.  
Blocking buffer: 3% nonfat dry milk in TBST.  
Detection: ECL Basic Kit (RM00020).  
Exposure time: 60s.

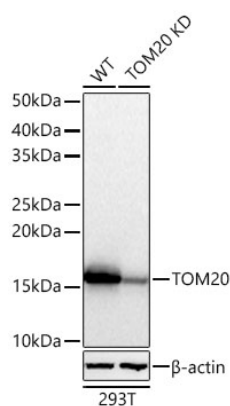
Western blot analysis of various lysates, using [KD Validated] TOM20 Rabbit mAb (A19403) at 1:5000 dilution.  
Secondary antibody: HRP Goat Anti-Rabbit IgG (H+L) (AS014) at 1:10000 dilution.  
Lysates/proteins: 25µg per lane.  
Blocking buffer: 3% nonfat dry milk in TBST.  
Detection: ECL Basic Kit (RM00020).  
Exposure time: 10s.



Western blot analysis of lysates from HeLa cells using [KD Validated] TOM20 Rabbit mAb (A19403) at 1:5000 dilution incubated overnight at 4°C.  
Secondary antibody: HRP-conjugated Goat anti-Rabbit IgG (H+L) (AS014) at 1:10000 dilution.  
Lysates/proteins: 25 µg per lane.  
Blocking buffer: 3% nonfat dry milk in TBST.  
Detection: ECL Basic Kit (RM00020).  
Exposure time: 10s.

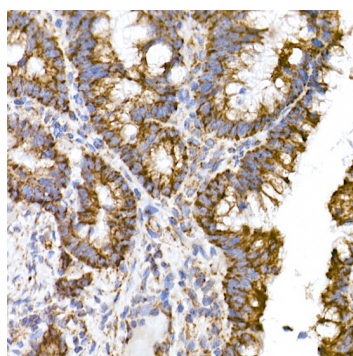
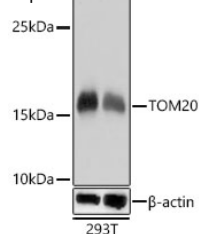


## Validation Data

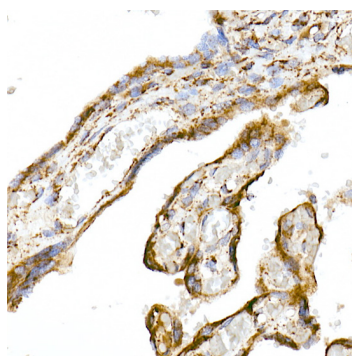


Western blot analysis of lysates from wild type (WT) and [KD Validated] TOM20 knockdown (KD) 293T cells using TOM20 Rabbit mAb (A19403) at 1:5000 dilution incubated overnight at 4°C.  
Secondary antibody: HRP-conjugated Goat anti-Rabbit IgG (H+L) (AS014) at 1:10000 dilution.  
Lysates/proteins: 25 µg per lane.  
Blocking buffer: 3% nonfat dry milk in TBST.  
Detection: ECL Basic Kit (RM00020).  
Exposure time: 10s.

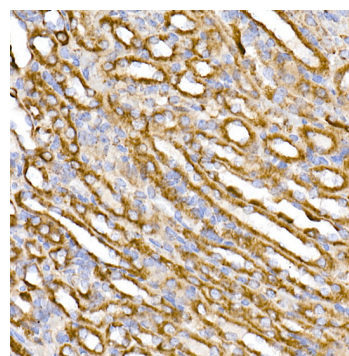
Western blot analysis of lysates from wild type(WT) and [KD Validated] TOM20 knockdown (KD) 293T, using TOM20 Rabbit mAb (A19403) at 1:1000 dilution.  
Secondary antibody: HRP Goat Anti-Rabbit IgG (H+L) (AS014) at 1:10000 dilution.  
Lysates/proteins: 25ug per lane.  
Blocking buffer: 3% nonfat dry milk in TBST.  
Detection: ECL Basic Kit (RM00020).  
Exposure time: 1s.



Immunohistochemistry analysis of TOM20 in paraffin-embedded human colon carcinoma using [KD Validated] TOM20 Rabbit mAb (A19403) at dilution of 1:50(40x lens).Perform microwave antigen retrieval with 10 mM Tris/EDTA buffer pH 9.0 before commencing with IHC staining protocol.

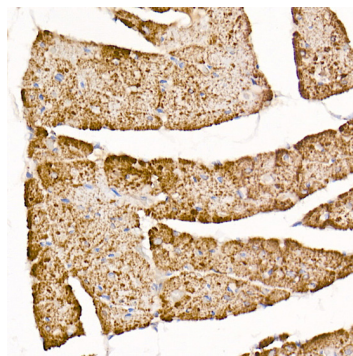


Immunohistochemistry analysis of TOM20 in paraffin-embedded human placenta using [KD Validated] TOM20 Rabbit mAb (A19403) at dilution of 1:50(40x lens).Perform microwave antigen retrieval with 10 mM Tris/EDTA buffer pH 9.0 before commencing with IHC staining protocol.

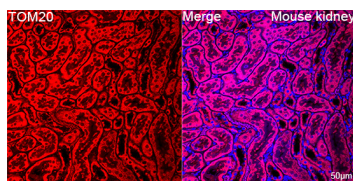


Immunohistochemistry analysis of TOM20 in paraffin-embedded mouse kidney using [KD Validated] TOM20 Rabbit mAb (A19403) at dilution of 1:50(40x lens).Perform microwave antigen retrieval with 10 mM Tris/EDTA buffer pH 9.0 before commencing with IHC staining protocol.

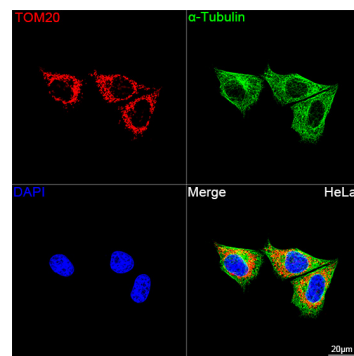
## Validation Data



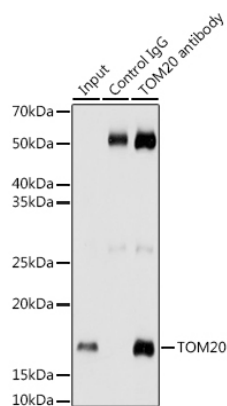
Immunohistochemistry analysis of [KD Validated] TOM20 in paraffin-embedded rat heart using TOM20 Rabbit mAb (A19403) at dilution of 1:50 (40x lens). Perform microwave antigen retrieval with 10 mM Tris/EDTA buffer pH 9.0 before commencing with IHC staining protocol.



Confocal imaging of paraffin-embedded Mouse kidney using [KD Validated] TOM20 Rabbit mAb (A19403, dilution 1:200) followed by a further incubation with Cy3 Goat Anti-Rabbit IgG (H+L) (AS007, dilution 1:500) (Red). DAPI was used for nuclear staining (Blue). Objective: 40x. Perform high pressure antigen retrieval with 0.01 M citrate buffer (pH 6.0) prior to IF staining.



Confocal imaging of HeLa cells using [KD Validated] TOM20 Rabbit mAb (A19403, dilution 1:200) followed by a further incubation with Cy3 Goat Anti-Rabbit IgG (H+L) (AS007, dilution 1:500) (Red). The cells were counterstained with α-Tubulin Mouse mAb (AC012, dilution 1:400) followed by incubation with ABflo® 488-conjugated Goat Anti-Mouse IgG (H+L) Ab (AS076, dilution 1:500) (Green). DAPI was used for nuclear staining (Blue). Objective: 100x.



Immunoprecipitation analysis of 200 µg extracts from HeLa cells using 3 µg [KD Validated] TOM20 antibody (A19403). Western blot was performed from the immunoprecipitate using TOM20 antibody (A19403) at a dilution of 1:1000.