

A1820

Leader in Biomolecular Solutions for Life Science



## KEAP1 Rabbit pAb

Catalog No.: A1820

32 Publications

### Basic Information

#### Observed MW

60-64kDa

#### Calculated MW

70kDa

#### Category

Polyclonal Antibody

#### Applications

WB, IHC-P, IF/ICC, ELISA

#### Cross-Reactivity

Human, Mouse, Rat

### Background

This gene encodes a protein containing KELCH-1 like domains, as well as a BTB/POZ domain. Kelch-like ECH-associated protein 1 interacts with NF-E2-related factor 2 in a redox-sensitive manner and the dissociation of the proteins in the cytoplasm is followed by transportation of NF-E2-related factor 2 to the nucleus. This interaction results in the expression of the catalytic subunit of gamma-glutamylcysteine synthetase. Two alternatively spliced transcript variants encoding the same isoform have been found for this gene.

### Recommended Dilutions

WB	1:100 - 1:500
IHC-P	1:50 - 1:200
IF/ICC	1:50 - 1:200

### Immunogen Information

#### Gene ID

9817

#### Swiss Prot

Q14145

#### Immunogen

Recombinant fusion protein containing a sequence corresponding to amino acids 320-510 of human KEAP1 (NP\_036421.2).

#### Synonyms

INrf2; KLHL19; KEAP1

### Contact



[www.abclonal.com](http://www.abclonal.com)

### Product Information

#### Source

Rabbit

#### Isotype

IgG

#### Purification

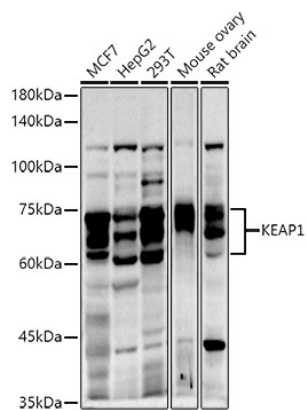
Affinity purification

#### Storage

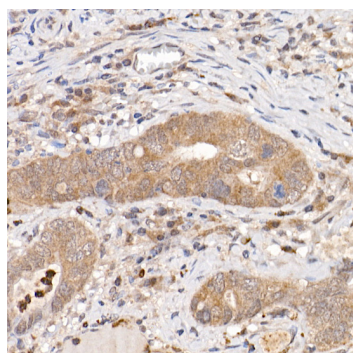
Store at -20°C. Avoid freeze / thaw cycles.

Buffer: PBS with 0.05% proclin300, 50% glycerol, pH7.3.

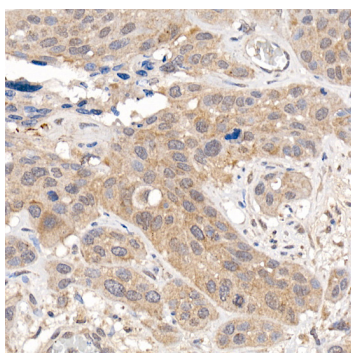
## Validation Data



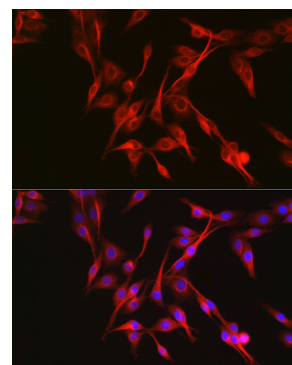
Western blot analysis of various lysates using KEAP1 Rabbit pAb (A1820) at 1:500 dilution.  
 Secondary antibody: HRP Goat Anti-Rabbit IgG (H+L) (A5014) at 1:10000 dilution.  
 Lysates/proteins: 25µg per lane.  
 Blocking buffer: 3% nonfat dry milk in TBST.  
 Detection: ECL Enhanced Kit (RM00021).  
 Exposure time: 60s.



Immunohistochemistry analysis of KEAP1 in paraffin-embedded human colon carcinoma using KEAP1 Rabbit pAb (A1820) at dilution of 1:50 (40x lens). Perform high pressure antigen retrieval with 10 mM citrate buffer pH 6.0 before commencing with IHC staining protocol.



Immunohistochemistry analysis of KEAP1 in paraffin-embedded human esophageal cancer using KEAP1 Rabbit pAb (A1820) at dilution of 1:50 (40x lens). Perform high pressure antigen retrieval with 10 mM citrate buffer pH 6.0 before commencing with IHC staining protocol.



Immunofluorescence analysis of PC-12 cells using KEAP1 Rabbit pAb (A1820) at dilution of 1:50 (40x lens). Secondary antibody: Cy3 Goat Anti-Rabbit IgG (H+L) (A5007) at 1:500 dilution. Blue: DAPI for nuclear staining.