

A18064

Leader in Biomolecular Solutions for Life Science



[KO Validated] UBE2S Rabbit pAb

Catalog No.: A18064

KO Validated

2 Publications

Basic Information

Observed MW

26kDa

Calculated MW

24kDa

Category

Polyclonal Antibody

Applications

WB, ELISA

Cross-Reactivity

Human, Mouse, Rat

Background

This gene encodes a member of the ubiquitin-conjugating enzyme family. The encoded protein is able to form a thiol ester linkage with ubiquitin in a ubiquitin activating enzyme-dependent manner, a characteristic property of ubiquitin carrier proteins.

Recommended Dilutions

WB 1:200 - 1:2000

Immunogen Information

Gene ID

27338

Swiss Prot

Q16763

Immunogen

Recombinant fusion protein containing a sequence corresponding to amino acids 122-221 of human UBE2S (NP_055316.2).

Synonyms

EPF5; E2EPF; E2-EPF; 2S

Contact



www.abclonal.com

Product Information

Source

Rabbit

Isotype

IgG

Purification

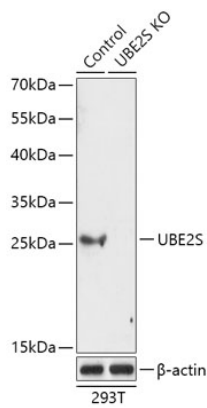
Affinity purification

Storage

Store at -20°C. Avoid freeze / thaw cycles.

Buffer: PBS with 0.01% thimerosal, 50% glycerol, pH 7.3.

Validation Data



Western blot analysis of lysates from wild type (WT) and UBE2S knockout (KO) 293T cells, using [KO Validated] UBE2S Rabbit pAb (A18064) at 1:1000 dilution.
Secondary antibody: HRP Goat Anti-Rabbit IgG (H+L) (AS014) at 1:10000 dilution.
Lysates/proteins: 25 μ g per lane.
Blocking buffer: 3% nonfat dry milk in TBST.
Detection: ECL Basic Kit (RM00020).
Exposure time: 5s.