

A17083

Leader in Biomolecular Solutions for Life Science



## YKT6 Rabbit pAb

Catalog No.: A17083

### Basic Information

**Observed MW**

22kDa

**Calculated MW**

22kDa

**Category**

Polyclonal Antibody

**Applications**

WB, ELISA

**Cross-Reactivity**

Rat

### Background

This gene product is one of the SNARE recognition molecules implicated in vesicular transport between secretory compartments. It is a membrane associated, isoprenylated protein that functions at the endoplasmic reticulum-Golgi transport step. This protein is highly conserved from yeast to human and can functionally complement the loss of the yeast homolog in the yeast secretory pathway.

### Recommended Dilutions

WB 1:500 - 1:2000

### Immunogen Information

**Gene ID**

10652

**Swiss Prot**

O15498

**Immunogen**

A synthetic peptide corresponding to a sequence within amino acids 100-198 of human YKT6 (NP\_006546.1).

**Synonyms**

YKT6

### Contact



[www.abclonal.com](http://www.abclonal.com)

### Product Information

**Source**

Rabbit

**Isotype**

IgG

**Purification**

Affinity purification

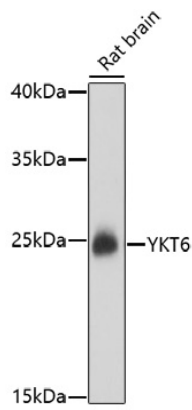
**Storage**

Store at -20°C. Avoid freeze / thaw cycles.

Buffer: PBS with 0.01% thimerosal, 50% glycerol, pH 7.3.

## Validation Data

---



Western blot analysis of lysates from rat brain, using YKT6 Rabbit pAb (A17083) at 1:1000 dilution.  
Secondary antibody: HRP Goat Anti-Rabbit IgG (H+L) (AS014) at 1:10000 dilution.  
Lysates/proteins: 25µg per lane.  
Blocking buffer: 3% nonfat dry milk in TBST.  
Detection: ECL Basic Kit (RM00020).  
Exposure time: 90s.