

A16562

Leader in Biomolecular Solutions for Life Science



KIF17 Rabbit pAb

Catalog No.: A16562

Basic Information

Observed MW

170kDa

Calculated MW

115kDa

Category

Polyclonal Antibody

Applications

WB, IHC-P, IF/ICC, ELISA

Cross-Reactivity

Human, Mouse, Rat

Background

Predicted to enable microtubule binding activity and plus-end-directed microtubule motor activity. Predicted to be involved in anterograde dendritic transport of neurotransmitter receptor complex and cell projection organization. Predicted to act upstream of or within microtubule-based process; protein-containing complex localization; and vesicle-mediated transport. Predicted to be located in microtubule cytoskeleton. Predicted to be part of intraciliary transport particle B and kinesin complex. Predicted to be active in cilium; microtubule cytoskeleton; and neuron projection.

Recommended Dilutions

WB	1:500 - 1:2000
IHC-P	1:50 - 1:200
IF/ICC	1:50 - 1:200

Immunogen Information

Gene ID

57576

Swiss Prot

Q9P2E2

Immunogen

Recombinant fusion protein containing a sequence corresponding to amino acids 360-660 of human KIF17 (NP_001116291).

Synonyms

KIF3X; KLP-2; OSM-3; KIF17B; KIF17

Contact



www.abclonal.com

Product Information

Source

Rabbit

Isotype

IgG

Purification

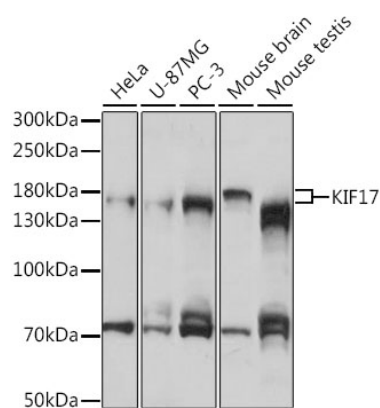
Affinity purification

Storage

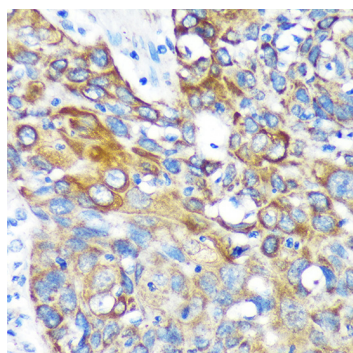
Store at -20°C. Avoid freeze / thaw cycles.

Buffer: PBS with 0.01% thimerosal, 50% glycerol, pH7.3.

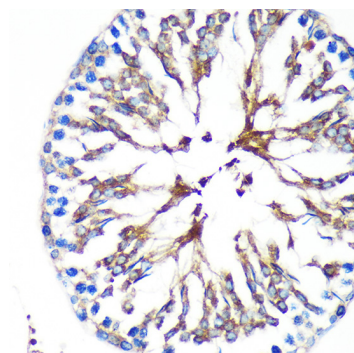
Validation Data



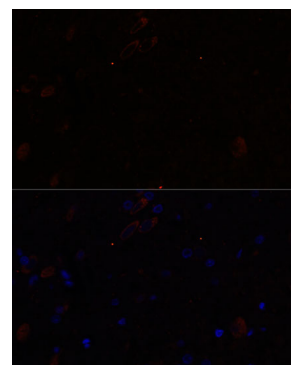
Western blot analysis of various lysates using KIF17 Rabbit pAb (A16562) at 1:1000 dilution.
 Secondary antibody: HRP Goat Anti-Rabbit IgG (H+L) (AS014) at 1:10000 dilution.
 Lysates/proteins: 25µg per lane.
 Blocking buffer: 3% nonfat dry milk in TBST.
 Detection: ECL Basic Kit (RM00020).
 Exposure time: 30s.



Immunohistochemistry analysis of KIF17 in paraffin-embedded Human lung cancer using KIF17 Rabbit pAb (A16562) at dilution of 1:100 (40x lens). Perform microwave antigen retrieval with 10 mM PBS buffer pH 7.2 before commencing with IHC staining protocol.



Immunohistochemistry analysis of KIF17 in paraffin-embedded Rat testis using KIF17 Rabbit pAb (A16562) at dilution of 1:100 (40x lens). Perform microwave antigen retrieval with 10 mM PBS buffer pH 7.2 before commencing with IHC staining protocol.



Immunofluorescence analysis of paraffin-embedded rat brain using KIF17 Rabbit pAb (A16562) at dilution of 1:100. Secondary antibody: Cy3 Goat Anti-Rabbit IgG (H+L) (AS007) at 1:500 dilution. Blue: DAPI for nuclear staining.