

A16554

Leader in Biomolecular Solutions for Life Science



GPR108 Rabbit pAb

Catalog No.: A16554

Basic Information

Observed MW

76kDa

Calculated MW

61kDa

Category

Polyclonal Antibody

Applications

WB, ELISA

Cross-Reactivity

Human, Mouse, Rat

Background

Predicted to be involved in negative regulation of toll-like receptor signaling pathway.
Located in trans-Golgi network.

Recommended Dilutions

WB 1:1000 - 1:5000

Immunogen Information

Gene ID

56927

Swiss Prot

Q9NPR9

Immunogen

Recombinant fusion protein containing a sequence corresponding to amino acids 33-260 of human GPR108 (NP_001073921.1).

Synonyms

LUSTR2; GPR108

Contact



www.abclonal.com

Product Information

Source

Rabbit

Isotype

IgG

Purification

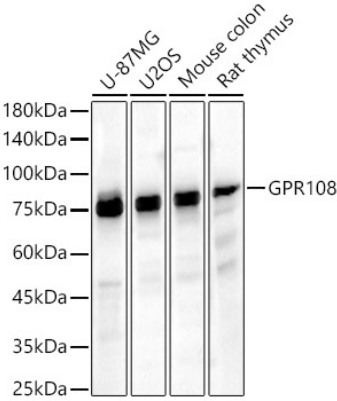
Affinity purification

Storage

Store at -20°C. Avoid freeze / thaw cycles.

Buffer: PBS with 0.01% thimerosal, 50% glycerol, pH7.3.

Validation Data



Western blot analysis of various lysates, using GPR108 Rabbit pAb (A16554) at 1:2000 dilution.
Secondary antibody: HRP Goat Anti-Rabbit IgG (H+L) (AS014) at 1:10000 dilution.
Lysates/proteins: 25µg per lane.
Blocking buffer: 3% nonfat dry milk in TBST.
Detection: ECL Basic Kit (RM00020).
Exposure time: 25s.