

A16475

Leader in Biomolecular Solutions for Life Science



## PARP2 Rabbit pAb

Catalog No.: A16475

### Basic Information

#### Observed MW

66kDa

#### Calculated MW

66kDa

#### Category

Polyclonal Antibody

#### Applications

WB, ELISA

#### Cross-Reactivity

Mouse, Rat

### Background

This gene encodes poly(ADP-ribosyl)transferase-like 2 protein, which contains a catalytic domain and is capable of catalyzing a poly(ADP-ribosyl)ation reaction. This protein has a catalytic domain which is homologous to that of poly (ADP-ribosyl) transferase, but lacks an N-terminal DNA binding domain which activates the C-terminal catalytic domain of poly (ADP-ribosyl) transferase. The basic residues within the N-terminal region of this protein may bear potential DNA-binding properties, and may be involved in the nuclear and/or nucleolar targeting of the protein. Two alternatively spliced transcript variants encoding distinct isoforms have been found.

### Recommended Dilutions

WB 1:500 - 1:2000

### Immunogen Information

#### Gene ID

10038

#### Swiss Prot

Q9UGN5

#### Immunogen

A synthetic peptide corresponding to a sequence within amino acids 450-550 of human PARP2 (NP\_001036083.1).

#### Synonyms

ARTD2; ADPRT2; PARP-2; ADPRTL2; ADPRTL3; pADPRT-2; PARP2

### Contact



[www.abclonal.com](http://www.abclonal.com)

### Product Information

#### Source

Rabbit

#### Isotype

IgG

#### Purification

Affinity purification

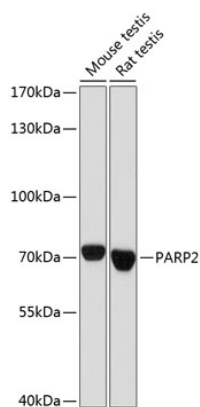
#### Storage

Store at -20°C. Avoid freeze / thaw cycles.

Buffer: PBS with 0.01% thimerosal, 50% glycerol, pH 7.3.

## Validation Data

---



Western blot analysis of various lysates using PARP2 Rabbit pAb (A16475) at 1:1000 dilution.  
Secondary antibody: HRP Goat Anti-Rabbit IgG (H+L) (A5014) at 1:10000 dilution.  
Lysates/proteins: 25µg per lane.  
Blocking buffer: 3% nonfat dry milk in TBST.  
Detection: ECL Basic Kit (RM00020).  
Exposure time: 10s.